

VOTED **No.1** MOBILITY RETAILER IN THE UK

**Ableworld**

[www.ableworld.co.uk](http://www.ableworld.co.uk)

*Your Local Specialist*



**LEADING STAIRLIFT & MOBILITY RETAILER**

For full details of all our stores visit [www.ableworld.co.uk](http://www.ableworld.co.uk)



# About us

## ABLEWORLD ETHICAL SELLING POLICY

As an ethical mobility retailer we strongly believe that before purchasing some items of mobility equipment, customers should be correctly assessed and advised which product fits their needs best. The wrong product sold over the internet or in-store without a proper assessment could lead to added complications to a person's condition.

For this reason some of our products are only available for purchase after an assessment has been made either in the home or in one of our stores. These products include Chairs (Risers and Fireside), Scooters, Powerchairs, Wheelchairs, Bathlifts, Beds and Stairlifts.

If you would like an assessment in your home please contact your closest Ableworld store for more information or alternatively please visit the store where our trained advisors will be happy to help you.

We are proud to be endorsed as a Which Trusted Trader, ensuring we provide our customers with the best possible service.

## VAT RELIEF

If you have a long-term medical condition or are chronically sick or disabled you are eligible.

All products are subject to availability.  
Not all stores will stock the full range but will endeavour to transfer products from other stores.  
Prices on current price list are subject to change.  
\*Specification and measurements of products may vary.  
Insurance/Warranty is arranged by Ableworld UK Ltd and provided through Mark Bates Ltd t/a Premier Care, Premier House, Londonthorpe Road, Grantham, Lincolnshire, NG31 9SN who are authorised and regulated by the Financial Conduct Authority. FRN 308390

You do not need a doctor's letter or other such documentation. If you are in doubt you should call your local Customs office or call the National Advice Service on 0300 123 1073.

## HOW DO I CLAIM?

You will need to complete the simple VAT exemption declaration either on our website, in this catalogue or in-store. We will then process your order at the retail price quoted on your order less the VAT element where applicable.

## ABLEWORLD DELIVERY

Delivery within 30 miles of our store can be arranged. Ask in store.

## RETURNS POLICY

Ableworld understands that there are times when you will have to return a purchase. We will happily refund or exchange your purchase in the following circumstances:

We will normally fully refund items from our stock (not special orders) that are still in their wrapping and unused within 28 days of purchase when returned to the store. This offer is not open to Riser Recliner Chairs, Scooters, Power Chairs, Beds and items subject to hygiene issues, eg. Commodes and Pillows.

## GUARANTEE

Please note all products to be repaired under guarantee that were collected from store, need to be brought back to your nearest store for Ableworld to action the guarantee. Products that were delivered and need to be repaired under guarantee will be collected by Ableworld or repaired on site.



Our aim at Ableworld is to provide caring solutions for our customers enabling them to enjoy greater independence and more comfortable and active lives. We do this by providing quality products and services at value for money prices.

We are honoured to have been voted the Number 1 Mobility Retailer in the UK, so you can be sure that you will be well looked after in any of our mobility stores.



## CONTENTS

● Bathing	5-10	● Kitchen & Dining	53-58
● Bedroom	11-14	● Mobility	59-66
● Chairs	15-20	● Supports	67-70
● Dressing & Comfort	21-30	● Powerchairs & Scooters	71-79
● Healthcare	31-40	● Engineering	80
● Household	41-47	● Toileting	81-88
● Stairlifts	48-52	● Wheelchairs	89-97
		Index	98-99



Your Local Specialist

# 5 easy ways to order



## Your local Ableworld store

Ableworld have stores throughout Great Britain. Call in today or refer to the back page for details.



## Call your local Store

Find your local store on the back page as well as the stores in the local area and beyond.



## FREE Home Visit

We can carry out a no obligation assessment in the comfort of your own home on certain products.



## Online Delivery UK wide

Visit [www.ableworld.co.uk](http://www.ableworld.co.uk) for 24 hour online ordering delivered to your door.\*



## Click and Collect

Visit [www.ableworld.co.uk](http://www.ableworld.co.uk) to reserve your item for collection at any one of our Ableworld stores

\*Certain items subject to full assessment.



# Bathing

One of life's great pleasures is relaxing in a hot bath, or easing away aches and pains with a steaming shower. But it's not quite so enjoyable when you're worried about slipping, or concerned about how you're going to get out of the bath.

Our range of bathroom aids can make using the bath and shower much easier for the elderly and disabled. We stock an extensive range of bath lifts, seats & steps and shower chairs & stools. Safety in the bathroom can be aided with products such as grab rails and anti-slip bath mats.

# Shower Stools & Chairs



## Corner Shower Stool



- Adjustable legs and a t-shaped transom bar for extra strength
- Manufactured from rust-free aluminium
- Fine leg adjustment maximises stability and safety
- Maximum user weight: 25 stone

SKU: 5055062623709

## Bath & Shower Stool



- Robust yet lightweight with a crack-proof seat.
- Rubber feet for increased safety.
- Height adjustable for safety and comfort.
- Maximum user weight: 21 stone

SKU: 5060266841958

## Shower Stool



- Durable and corrosion proof frame
- Drainage holes in the seat reduces the risk of slipping
- Angled legs with suction style tips provide additional stability
- Maximum user weight: 21 stone

SKU: 822383122229

## Wall Mounted Shower Stool



- Fold out height adjustable legs for added security
- Drainage holes in the seat reduces the risk of slipping
- Seat flips up against the wall when not in use
- Maximum user weight: 25 stone

SKU: 5055062609918

## Mobile Shower Chair



- Fixed height mobile shower chair with two brake castors.
- Makes transporting the user in and out of the shower easier.
- Maximum user weight: 30 stone

SKU: 5055062606191

## Static Shower Chair



- Moulded polypropylene seat offers maximum drainage
- Height adjustable and stackable for ease of storage.
- Maximum user weight: 20 stone

SKU: 5055062623716

## Shower Stool With Back



- Fantastic for anyone who struggles with back pains or balance
- Slip resistant design which provides a safe bathing environment
- Height: 70cms-92.8cm
- Maximum User Weight: 18 stone

SKU: 5021196703679

## Kingfisher Bath Seat



- Non-slip suction cups which attach to the bottom of any bath
- Adjust to suit changing needs with the simple addition or removal of extension legs (available separately)
- Can be used in conjunction with the Kingfisher Bath Board
- Maximum user weight: 25 stone

SKU: 5050962001923

## Bath Seat Extension Legs



- Enables the Kingfisher Bath Seat to be raised to a maximum of 12"
- Each set of extension legs will raise the bath seat by 2"
- The ability to increase and reduce the seat height will support changing mobility needs

SKU: 5050962001930



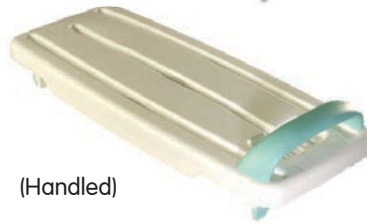
## FREE Home Visit

We can carry out a no obligation assessment in the comfort of your own home on certain products.

### Kingfisher Bath Boards



(Economy)



(Handled)

- Hygienic bath board with an extended width seating area to accommodate larger users
- Width adjustable to suit most baths
- Can be used in conjunction with the Kingfisher Bath Seat
- Easy fit handle for added support and stability
- Width: 26.25" - 28.25"
- Maximum user weight: 31 stone

**SKU: 5050962001626 (Economy)**

**SKU: 5050962018990 (Handled)**

### Surefoot Bath Board



- Width adjustable bath board with a unique design as it integrates both a bath and shower board into one
- It can be used as a transfer aid into the bath or as a seat whilst in the shower
- Maximum user weight: 31.5 stone

**SKU: 5050962202917**

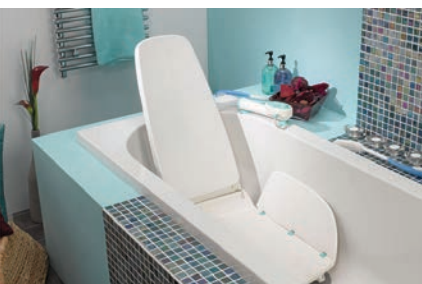
### Bathing Cushion



- Lowers you down and raises you back up again, all at the touch of a button. Whilst at the bottom of the bath you can choose whether to keep some air in the cushion to provide a supportive backrest, or release it to lie back for a completely natural bath
- Portable, lightweight and very stable
- Ideal if you have difficulty getting in and out of the bath
- Maximum User Weight: 23 stone

**SKU: 5055062623044**

### Economy Bathlift



- Stylish, lightweight and portable which helps provide support when bathing
- Waterproof battery-operated hand control to lower and raise you when required
- Maximum user weight: 20 stone

**SKU: 5055785714746**

### Bellavita Bathlift



Available in  
 Blue  White

**SKU: 5055062604777**

- An easy to use bathlift that gently lowers users down into the bath and raises the user to the top of the bath with the touch of a button
- Extremely lightweight and can be stored, fitted or transported easily
- Fitted with market leading 50 degrees reclining backrest ensures this bathlift is ideal for users who require a greater hip-to-back sitting angle
- The hand controller is lightweight, fully waterproof and floatable with light-touch easy to use buttons
- Maximum user weight: 22 stone





## Safe Strips & Discs



**SKU: 5060192212259 (Strips)**  
**SKU: 5060192212266 (Discs)**

- Convenient, efficient and super aesthetic way of applying slip resistant surface to your bath or shower
- Easy to clean and do not harbour bacteria
- Non-abrasive and will not irritate bare skin
- Safe Strips: Approx. 30. Size: 20cm x 2cm
- Safe Discs: Approx. 70. Size: 4cm

## Corner Shower Mat



- Soft, comfortable and free draining
- Strong grip suckers in a new configuration
- Easy to clean and machine washable at 40°C and allow to dry naturally

**SKU: 5060165241385**

## Bath Step



- Textured, non-slip top surface and rubberised feet for increased safety
- Handy bath steps can be securely stacked, raising the height in 2" increments
- Maximum user weight: 18 stone

**SKU: 5021196694946**

## Soft Feel Bath & Shower Mats



- Designed for extra comfort
- Waterproof foam material gives the combination of safety and comfort
- Made from non-latex material
- Easy to fit and remove
- Bath Mat Size: 70cm x 40.5cm
- Shower Mat Size: 55.5cm x 55.5cm

**SKU: 5038948430486 (Bath Mat)**

**SKU: 5038948430592 (Shower Mat)**

## Cork Bath Step



- A lightweight cork step box with a non-slip base
- Suitable for use around the home including the bathroom
- Available in heights of either 3" or 4"

**SKU: 5021196655039 (3")**

**SKU: 5021196655046 (4")**

## Rubber Anti-Slip Bath & Shower Mats



- Ideal for added stability in your bathroom
- The 'basket weave' pattern reduces the risk of slipping and the drainage holes allow the water to quickly drain
- These mats cannot be used with a textured bathtub or shower base

**SKU: 5038948430486 (Bath Mat)**

**SKU: 5038948430592 (Shower Mat)**



## Lotion Applicator



- Long handled applicator with a washable pad • Ideal for applying lotions, creams, oils or skin medications to your back, legs and feet • Rotating balls ensure even distribution and a pleasant massage
- Length: 18"

SKU: 4004128051841

## Flannel Strap & Mitt



- Ideal for someone with limited flexibility to wash their back • The matching hand mitt is double sided with a soft terry cotton on one side and a coarser side
- Strap Length: 80cm

SKU: 5050996038308

## Wet Wash Gloves



- Provides a more pleasant and moisturising effect than water and soap
- For personal hygiene use
- Perfume free
- Disposable
- Pack of 8 gloves

SKU: 5703538263002

## Scrubbies Disposable Body Wash Pads



- Dry disposable body wash pads filled with gentle soap and moisturising ingredients
- Simply add a splash of water to the towel to activate • Pads are designed for single use, and are made from 100% polyester and fully recyclable

SKU: 5055062629619

## Foot Cleaner & Pumice



- Ideal for people who have limited mobility • Suction caps help to keep it safely secured to the bath during use
- Can be used with any type of liquid soap and the centre pumice gently exfoliates and smooths feet

SKU: 5021196609926

## Nail Suction Brush



- A nail brush mounted on suction pads to hold it in place whilst it's being used
- Ideal for people with poor dexterity

SKU: 5055062610402

## Long Handled Sponges & Brushes



Long Handled Toe Washer



Curved Bath Brush

- We stock a range of long handled sponges to help clean those hard to reach areas in the bath or shower.
- Ideal for people with limited arm or shoulder movement.

SKU: 5050996036670 (Long Handled Toe Washer)

SKU: 5021196683285 (Long Handled Bath Sponge)

SKU: 5050996007854 (Contoured Bath Sponge)

SKU: 5050962024359 (Toe & Foot Cleaner)

SKU: 4713280207545 (Curved Bath Brush)

SKU: 4713280207132 (Foot Brush)



Long Handled Bath Sponge

## Long Handled Hair Wash Brush



- Ergonomic with an anti-slip long handle
- Helps to either shampoo or massage the head • Ideal for people with limited shoulder movement

SKU: 4713280207576



## Tap Turners



- Large handle tap turners • Textured handle for added leverage • Blue and red supplied for hot and cold tap
- Ideal for those with poor grip or impaired eyesight
- Suitable for capstan and crystal type taps

**SKU: 5016181000284**

## Floating Thermometer



- Ideal for giving an accurate reading
- Give the thermometer a shake and put it in the bath and it'll give a reading within 5 seconds • Easy to read LCD display with visual warnings for excessively hot or cold temperatures

**SKU: 5060407840833**



**AT  
EXEMPT  
& RELIEF**

**Are you eligible  
for VAT Relief?**  
See page 2 for details

## Toothpaste Squeezer



- Perfect for getting contents out of tubes
- Clamps the tube in the holder and squashing it as you turn the knob
- Ideal for those with a weakened grip

**SKU: 4713280200966**

## Cast Protectors



- A comfortable and waterproof way to protect a plaster cast or a dressing that you need to protect when showering or bathing. The cast protectors are re-usable and designed for single person use.
- Available in lower arm or leg protectors, or full arm and leg protectors.
- Full Arm Length: 39"
- Full Leg Length: 59"
- Lower Arm Length: 22"
- Lower Leg Length: 23"

**SKU: 5055062627073 (Full Arm)**

**SKU: 5055062627080 (Full Leg)**

**SKU: 5055062610433 (Lower Arm)**

**SKU: 5055062610440 (Lower Leg)**

## Shampoo Cap



- Place the shampoo cap on the head covering all the hair and massage gently before removing • No need for water, shampoo or conditioner • Easy to heat up in the microwave • 1 cap per pack

**SKU: 5060038659057**

## Shampoo Basin



- Designed to make washing hair easier whilst in bed
- Can be inflated by mouth or with a pump (not included)
- Deflates for compact storage
- Size: 16 (H) x 56 (W) x 53 (D)cm

**SKU: 5021196609902**



# Bedroom

There's nothing better than starting your day feeling fresh and energised after a good night's sleep. But if your sleep is disturbed because of pain or discomfort through illness, injury, disability, or just general restlessness, an adjustable bed and bed accessories may be the answer.

At Ableworld we sell a range of products which help you get a comfortable nights sleep.



## Calverly Adjustable Electric Bed



SKU: 5055062626618

As an orthopaedic bed the Calverly promotes good posture and spinal support. The design of the Calverly offers a more traditional style of adjustable beds. The 800ct pocket sprung unit mattress has a tufted finish to the mattress for greater stability and durability. The mattress comes with silver ventilators and flag stitched handles for easy turning.

All bases come with an option to be linked with others so that you can sleep next to your loved one whilst being able to adjust your bed to your individual needs. The base comes with a 5-part adjustable slatted base and twin wheeled castor system. The bed is controlled by a classic 6 button handset which allows you to choose from a range of positions to make sure you're comfortable.

Ideal for those who suffer with Asthma, Emphysema, Rheumatism, MS, back pain, circulation problems or other similar conditions.

Available in a divan base or as a shallow bed with legs.

Available with added extras such as headboard, drawers and leg options.

## Hartford Adjustable Electric Bed



SKU: 5055062626625

The Hartford features a 5-part motorised adjustable frame, allowing the user to effortlessly adjust the head and foot end individually or together in one movement.

The mattress consists of 50mm memory foam, on a luxurious supportive layer of reflex foam. The reflex foam acts as the spring system in an ordinary sprung mattress making it breathable, supportive and durable. The memory foam will offer the luxury for the perfect night's sleep, contouring to your body but also keeping your spine in its natural alignment.

The Hartford is hypoallergenic and breathable with a deep quilted, zip off, straight line cover and none turntable so you would need to rotate this mattress from head to toe.

The frame is controlled by a classic 6 button handset that allows you to choose from a range of positions, allowing for increased comfort all over.

The Hartford also features tension adjust sliders that are located on the wooden slates. These can be increased or decreased to give the most beneficial support in the lower back region.

Ideal for those who suffer with Asthma, Emphysema, Rheumatism, MS, back pain, circulation problems or other similar conditions.

Available in a divan base or as a shallow bed with legs. Available with added extras such as headboard, drawers and leg options.

## Parnell Bed Rail



Selected stores only ring store for details

- Aid for people who need assistance when getting in and out of bed • Broad base and sturdy frame • Clamps easily to the underside of almost any bed design
- Maximum user weight: 18 stone

SKU: 5055062631018

## Bed Support Rail



- Aids transfers into and out of one side of the bed, without affecting other occupants • Supplied with a strap and buckle set for use on slatted beds • Maximum user weight: 20 stone

SKU: 5055062623853

## Bed Tray



- Ideal for those confined to bed for long periods • Can be adjusted to different angles to suit most users • Lip on the table top to stop items rolling off • Lightweight and portable

SKU: 5021196609186

## Back Rest



- Versatile and adjustable with multiple fixed back positions • Covered with an easy clean fabric and comes complete with a head cushion • 5 different angles up to 85 degrees • Maximum user weight: 17 stone

SKU: 5021196595854

## Bed Relaxer



- Offers support and comfort whilst sitting or sleeping in bed • Can be used in two ways either upright or lying flat • Washable polyester fleece/velour cover
- Size: 46 x 56 x 19 > 3cm

SKU: 5060008230279

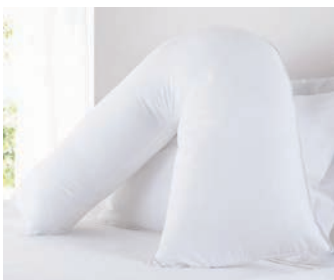
## Mattress Tilter



- Place at the foot of the bed to relieve symptoms of Oedema, Varicose Veins, low back pain and general fatigue • Use at the head of the bed to alleviate hiatus hernia and respiratory difficulties
- Size: 45 x 63 x 13 > 2cm

SKU: 5060008230309

## Comfort V Pillow



- A 'v' shaped pillow which gives excellent shoulder and neck support • Comfy fibre filling • Ideal for use either in bed or on a chair • Pillowcase is sold separately

SKU: 5050996029863 (Pillow)

SKU: 5060008232235 (Pillowcase)

## Batwing Pillow



- Shaped into three fibre filled sections to hold you snugly • The lumbar section gently supports your back whilst the side sections give fantastic lateral support
- Size: 78 x 80cm • Pillowcase is sold separately

SKU: 5050996046570 (Pillow)

SKU: 5050996046587 (Pillowcase)

## Designer Memory Pillow



- UK's top selling professional orthopaedic pillow
- It's unique moulded shape together with the pressure relieving properties of memory foam
- Fitted inner and zipped outer case as standard
- Size: 45 x 32 x 13cm

SKU: 5060008230590



# Ableworld Endorsements

**Ableworld are proud to be members of the following organisations outlining how important it is that we give our customers peace of mind.**

## NAEP

The National Association of Equipment Providers works closely with the Government on legislation. The Accreditation is the benchmark for a customer focused, high quality equipment provider who offers exemplary standards of service delivery. This scheme ensures that we offer high quality, reliable, personalised care delivered by dedicated staff who are knowledgeable and skilled in the provision of specialist equipment designed to promote independence.

**Visit [www.naep.org.uk](http://www.naep.org.uk) for more information.**

## CERA

The Community Equipment Retailer Accreditation is a national accreditation for retailers of equipment for people with disabilities. CERA is an organisation that has strict rules to ensure their members conform to high standards backed by NAEP. CERA will only work with retailers that satisfy the registration exacting standards which ensure staff are able to properly assess customer's needs.

**Visit [www.ceracommunityequipment.org](http://www.ceracommunityequipment.org) for more information.**

## Handicare Prestige Partners

Handicare, one of the leading manufacturers of stairlifts in the UK have awarded Ableworld with the Prestige Partner Award. Previously recognised as Elite Partners, we are proud to be awarded the new higher level of partnership and becoming one of only 5 Prestige Dealers in the UK, as well as being recognised as the top supplier 2019.

We are honoured to be endorsed as a Prestige Partner and believe the combination of highly skilled local engineers, listening to our customers, and an honest and non-pressured approach along with competitive prices and a 24 hour support helpline gives our customers added peace of mind when deciding to purchase a stairlift.

## Which? Trusted Trader

Consumers can have confidence when using Ableworld due to their Which? Trusted Traders endorsement. In order to become a Which? Trusted Trader, Ableworld successfully passed the endorsement process, including a visit by a professional Which? Trusted Traders assessor, with extensive trading standards experience, as well as a company credit check and customer references.

Which? Trusted Traders, said: "We are delighted to announce Ableworld as a Which? Trusted Trader. Our service gives consumers the confidence to make the right choices when it comes to finding skilled professionals and we are pleased to be able to give traders the chance to distinguish themselves from their peers. This scheme is a valuable and free resource for consumers."

Which? have been testing products and services and awarding 'Best Buy' icons for over 50 years. The Which? Trusted Traders scheme captures this spirit to give consumers the same reassurance when choosing a trader.

**Visit [www.trustedtraders.which.co.uk](http://www.trustedtraders.which.co.uk) for more information.**



**Community Equipment  
Retailer Accreditation**





# Chairs

There are many things to take into account when choosing a new Riser Recliner chair; seat height, width and depth are all essential, but just as important is understanding the type of motor your chair will use to adjust its position, as well as safety features.

Our friendly staff will advise you on all the options available and help guide you through the process to find the chair that's most suitable for you.

# Fireside & Riser Recliner Chairs



## Tarvin Fireside Chair



The Tarvin offers superb comfort and durability. It delivers firm lumbar support and the chunky arms enable a solid grip for easy rising. This chair is made from natural wood and has a removable seat cushion.

Specification:

- Seat Height: 19" • Seat Width: 19.25" • Seat Depth: 19"
- Overall Height: 47" • Overall Width: 23.5"
- Maximum User Weight: 18 stone

SKU: 5055062624867 (No Wings)  
SKU: 5055062625468 (Winged)

## Kingsley Fireside Chair



The Kingsley offers superb comfort and durability with a firm lumbar support. Made from natural wood and features shaped armrests, long handgrips and a removable seat cushion. It's wooden arms enable a solid grip for easy rising.

Specification:

- Seat Height: 19" • Seat Width: 19" • Seat Depth: 19.5"
- Overall Height: 44.5" • Overall Width: 23"
- Maximum User Weight: 23 stone

SKU: 537409306629 (Light Brown) SKU: 5037409306636 (Beige)

## Chelsfield Lounge Chair



The Chelsfield is designed to offer comfort and longevity as it is simple to maintain and clean. The back of the Chelsfield is ergonomically shaped for improved lumbar support and has a high back to offer head support for comfort. With fire retardant upholstery and height adjustable legs this sturdy, wipe-clean chair is an attractive and long-lasting piece of furniture.

Specification:

- Seat Height: 17" - 22" • Seat Width: 17" • Seat Depth: 18"
- Overall Height: 45"-50" • Overall Width: 20"
- Maximum User Weight: 22 stone

SKU: 5021196663881 (Brown) SKU: 5021196677277 (Cream)

## Bexton



The Bexton has a quiet and smooth action enabling users to recline into a relaxing position and also rise gently to almost standing position. The Bexton is upholstered in an easy to clean, soft feel polyurethane and features a convenient side pocket for easy storage.

Specification:

- Motor: Single
- Seat Height: 20" • Seat Width: 21" • Seat Depth: 21.5"
- Overall Height: 41" • Overall Width: 28"
- Maximum User Weight: 22 stone
- Warranty: 1-year parts and labour

SKU: 5055785718232 (Brown) SKU: 5055785718249 (Cream)  
SKU: 5055785718225 (Black)



## Indiana Petite



6 Months  
**FREE**  
Insurance

Available in 4 colours



Charcoal



Berry



Biscuit



Mushroom

The Indiana Petite is a stylish and comfortable chair. It has a soft feel Chenille fabric and a two-button handset with safety features. The Indiana Petite reclines to snooze position and the footrest can be elevated. It has a full-length chaise and a soft and comfortable seat and back cushion.

Specification:

- Motor: Single
- Seat Height: 17" • Seat Width: 18" • Seat Depth: 19"
- Overall Height: 40" • Overall Width: 30"
- Maximum User Weight: 23 stone
- Warranty: 1-year labour and extra 1-year parts

SKU: 5055062624850

## Anti-Entrapment

This device will stop the chair from travelling if it comes into contact with any other object. It will not affect the recline function.

This product can be used with selected riser recliners.

[Ask in-store for details](#)

SKU: 5055062606214

## Heat & Massage Unit

This system has three vibration units, two in the back and one on the seat which helps to improve circulation. The heat pad is situated in the seat and has a gentle warming effect. It has both 15 to 30 minute cycles.

This product can be used with selected riser recliners.

[Ask in-store for details](#)

SKU: 5055062617784

## Adlington



6 Months  
**FREE**  
Insurance

The Adlington provides comfort and quality at a fantastic price. The chair features an easy-to-use five button handset for user piece of mind. The Adlington offers a supportive lateral backrest with a lift over headrest for optimum comfort and a convenient side pocket.

Upholstered in a luxurious fabric and a range of colours certain to accompany any décor.

Available in single or dual motor.

Specification:

- Motor: Single or Dual
- Seat Height: 19" • Seat Width: 19" • Seat Depth: 20.5"
- Overall Height: 43" • Overall Width: 30"
- Maximum User Weight: 19.6 stone
- Warranty: 2 years

Available in 4 colours



Cocoa Brown



Elm Leaf Brown



Elm Leaf Red



Parchment Beige

Single Motor SKU's:

5055785718270 (Cocoa Brown) 5055785718287 (Elm Leaf Brown) 5055785718294 (Elm Leaf Red) 5055785718300 (Parchment Beige)

Dual Motor SKU's:

5055785718317 (Cocoa Brown) 5055785718324 (Elm Leaf Brown) 5055785718331 (Elm Leaf Red) 5055785718348 (Parchment Beige)

# Riser Recliner Chairs



## Sasha



6 Months  
**FREE**  
Insurance

Features  
anti-  
entrapment  
sensors

Available in 3 colours



Terracotta



Mink



Green

The Sasha offers all the comfort of a fully customised, made to measure chair. It's single motor design means that the chair is easy to control with just two buttons. It fits easily into smaller rooms and also features a battery back-up in case of power failure. The Sasha features anti-entrapment sensors to prevent anything getting caught in the mechanism.

Supplied complete with matching arm caps and anti-macassar to provide extra protection for the areas most prone to wear and tear.

Specification:

- Motor: Single
- Seat Height: 17" • Seat Width: 20" • Seat Depth: 20"
- Overall Height: 43" • Overall Width: 32"
- Maximum User Weight: 18 stone • Warranty: 2-year parts (ex. material) and 1-year labour

SKU: 5055062610129

## Chicago Anti-Microbial



6 Months  
**FREE**  
Insurance

Available in 2 colours



Black



Cobblestone

The Chicago Anti-Microbial features a distinct rise and recline action, and also includes an excellent full snooze position. It has a smooth and quiet operation and is simple to operate with a two button handset. Ideal for those who suffer with Arthritis, MS and other circulatory problems.

The Anti-Microbial PVC provides protection from and prevents the growth of harmful bacteria.

Specification:

- Motor: Single
- Seat Height: 19" • Seat Width: 20" • Seat Depth: 21"
- Overall Height: 43" • Overall Width: 33"
- Maximum User Weight: 23 stone
- Warranty: 1-year parts and labour

SKU: 5055062609352

## Wrenbury

EXCLUSIVE  
TO  
ABLEWORLD

6 Months  
**FREE**  
Insurance



This incredibly comfy chair is manufactured in the UK and is exclusive to Ableworld. The Wrenbury offers a lateral designed back cushion and is enhanced by Mammoths Medical Grade Foam Seating Technology providing an exceptional level of comfort and support. The dual motor action allows the back and footrest of the chair to move independently providing infinite seating positions and the easy-to-use handset, enables a smooth lifting action allowing the user to easily rise out of the chair.

Supplied complete with matching arm caps and anti-macassar to provide extra protection for the areas most prone to wear and tear.

Available in three sizes - petite, medium and large, the proportional seat height, width and depth dimensions offer a 'tailored to fit' riser recliner.

### Petite Specification:

Motor: Dual  
Seat Height: 17.5"  
Seat Width: 20"  
Seat Depth: 19"  
Overall Height: 40.5"  
Overall Width: 31.25"  
Max User Weight: 25 stone  
Warranty: 1 year on motor and 5-year parts

### Medium Specification:

Motor: Dual  
Seat Height: 19"  
Seat Width: 20"  
Seat Depth: 20"  
Overall Height: 42.5"  
Overall Width: 32.25"  
Max User Weight: 25 stone  
Warranty: 1 year on motor and 5-year parts

### Large Specification:

Motor: Dual  
Seat Height: 20.5"  
Seat Width: 21"  
Seat Depth: 21"  
Overall Height: 44.5"  
Overall Width: 33.75"  
Max User Weight: 25 stone  
Warranty: 1 year on motor and 5-year parts

Available in 4 colours



Slate



Silver



Fawn



Fennel



SKU: 5055062634422 (Petite) SKU: 5055062634453 (Medium) SKU: 5055062634484 (Large)

# Riser Recliner Chairs

## Astbury



SOFA AVAILABLE - ASK STAFF FOR DETAILS

6 Months FREE Insurance

The Astbury provides a firm yet supportive and comfortable support. The Astbury features a battery back-up system, two convenient side pockets allowing you to store useful day to day items and the hand-held controls are easy and simple to use. Designed with Dementia clients in mind so the footrest moves independently from the backrest and allows the user to raise just the feet without the sensation of falling backwards.

Supplied complete with matching arm caps and anti-macassar to provide extra protection for the areas most prone to everyday wear and tear.

Available in three sizes and in a lateral or waterfall back.

### Small Specification:

Motor: Dual  
Seat Height: 18.5"  
Seat Width: 18.5"  
Seat Depth: 18"  
Overall Height: 42.5"  
Overall Width: 32"  
Max User Weight: 25 stone  
Warranty: 1 year parts and labour and extra 4-year parts

### Medium Specification:

Motor: Dual  
Seat Height: 19.5"  
Seat Width: 20"  
Seat Depth: 20"  
Overall Height: 43.5"  
Overall Width: 33"  
Max User Weight: 25 stone  
Warranty: 1 year parts and labour and extra 4-year parts

### Large Specification:

Motor: Dual  
Seat Height: 21"  
Seat Width: 22"  
Seat Depth: 21"  
Overall Height: 44.5"  
Overall Width: 34"  
Max User Weight: 25 stone  
Warranty: 1 year parts and labour and extra 4-year parts

Available in 8 colours



Cocoa



Mink



Oatmeal



Plum



Spray Cocoa



Spray Mink



Spray Oatmeal



Spray Plum



Lateral Back: SKU: 5055062629664 (Small) SKU: 5055062629671 (Medium) SKU: 5055062629688 (Large)  
Waterfall Back: SKU: 5055062629695 (Small) SKU: 5055062629701 (Medium) SKU: 5055062629718 (Large)

## Cheshire Deluxe



EXCLUSIVE TO ABLEWORLD

SOFA AVAILABLE - ASK STAFF FOR DETAILS

6 Months FREE Insurance

The Cheshire Deluxe is made in the UK and offers ultimate comfort. The Cheshire has a dual motor which allows the back and base to move independently which provides infinite positions for users. This luxurious chair comes with a tilt-in-space feature allowing for individual adjustment of the back angle position.

Supplied complete with matching arm caps and anti-macassar to provide extra protection for the areas most prone to wear and tear.

Available in three sizes and in waterfall or button backs

Available in 6 colours



Jute



Oatmeal



Grey



Silver



Swirl Silver



Swirl Clay

### Small Specification:

Motor: Dual  
Seat Height: 18.25"  
Seat Width: 18.5"  
Seat Depth: 18.5"  
Overall Height: 46"  
Overall Width: 31"  
Max User Weight: 15 stone  
Warranty: 5-year parts and 1-year labour

### Medium Specification:

Motor: Dual  
Seat Height: 19.5"  
Seat Width: 20.5"  
Seat Depth: 19.5"  
Overall Height: 48"  
Overall Width: 33"  
Max User Weight: 20 stone  
Warranty: 5-year parts and 1-year labour

### Large Specification:

Motor: Dual  
Seat Height: 20.5"  
Seat Width: 22.5"  
Seat Depth: 20.5"  
Overall Height: 49"  
Overall Width: 35"  
Max User Weight: 25 stone  
Warranty: 5-year parts and 1-year labour



Button Back: SKU: 5055062630950 (Small) SKU: 5055062630974 (Medium) SKU: 5055062630998 (Large)  
Waterfall Back: SKU: 5055062630943 (Small) SKU: 5055062630967 (Medium) SKU: 5055062630981 (Large)

# Riser Recliner Chairs



## Prestbury

EXCLUSIVE TO ABLEWORLD

6 Months FREE Insurance



The Prestbury is UK made with a soft, fibre filled two tier back, real wooden knuckles and is enhanced by Mammoths Medical Grade Foam Seating Technology providing an exceptional level of comfort and support. The dual motor allows the back and footrest of the chair to move independently providing infinite seating positions and the easy-to-use handset, enables a smooth lifting action allowing the user to easily rise out of the chair.

Supplied complete with matching arm caps and anti-macassar to provide extra protection for the areas most prone to everyday wear and tear.

Available in three sizes.

### Small Specification:

Motor: Dual  
 Seat Height: 18"  
 Seat Width: 18.5"  
 Seat Depth: 18"  
 Overall Height: 43"  
 Overall Width: 30.5"  
 Max User Weight: 25 stone  
 Warranty: 5-year on motor and 1-year on upholstery

### Medium Specification:

Motor: Dual  
 Seat Height: 19"  
 Seat Width: 20"  
 Seat Depth: 20"  
 Overall Height: 43"  
 Overall Width: 30.5"  
 Max User Weight: 25 stone  
 Warranty: 5-year on motor and 1-year on upholstery

### Large Specification:

Motor: Dual  
 Seat Height: 21"  
 Seat Width: 20"  
 Seat Depth: 20.5"  
 Overall Height: 46"  
 Overall Width: 33"  
 Max User Weight: 25 stone  
 Warranty: 5-year on motor and 1-year on upholstery

Available in 4 colours



Latte



Mocha



Mink



Silver



SKU: 5055062629213 (Small) SKU: 5055062629206 (Medium) SKU: 5055062629190 (Large)

## Prestbury Soft Touch

EXCLUSIVE TO ABLEWORLD

6 Months FREE Insurance



The Prestbury Soft Touch has a soft, fibre filled two tier back, real wooden knuckles and is enhanced by Mammoths Medical Grade Foam Seating Technology providing an exceptional level of comfort and support. With a choice of three colours, the fabric is tested to a very high standard during an abrasion test and is ideal for heavy domestic use. The hand-held controller and side controls with a useful USB port are perfect for electronic devices. The dual motor allows the back and footrest of the chair to move independently providing infinite seating positions and the easy-to-use handset, enables a smooth lifting action allowing the user to easily rise out of the chair.

Supplied complete with matching arm caps and anti-macassar to provide extra protection for the areas most prone to everyday wear and tear.

Available in three sizes.

Available in 3 colours

### Small Specification:

Motor: Dual  
 Seat Height: 18.5"  
 Seat Width: 18"  
 Seat Depth: 18"  
 Overall Height: 41"  
 Overall Width: 28"  
 Max User Weight: 25 stone  
 Warranty: 5-year on motor and 1-year on upholstery

### Medium Specification:

Motor: Dual  
 Seat Height: 20"  
 Seat Width: 18.5"  
 Seat Depth: 19"  
 Overall Height: 43"  
 Overall Width: 30.5"  
 Max User Weight: 25 stone  
 Warranty: 5-year on motor and 1-year on upholstery

### Large Specification:

Motor: Dual  
 Seat Height: 21"  
 Seat Width: 20"  
 Seat Depth: 20.5"  
 Overall Height: 46"  
 Overall Width: 33"  
 Max User Weight: 25 stone  
 Warranty: 5-year on motor and 1-year on upholstery



Cocoa



Conker



Natural



SKU: 5055062629633 (Small) SKU: 5055062629640 (Medium) SKU: 5055062629657 (Large)



# Dressing & Comfort

A little help is always appreciated and we aim to help you by providing just what you need in comfort and dressing aids. We supply a wide range of dressing aids that can assist the elderly and disabled in their everyday lives.

Whether this be aids for putting on items, pulling on socks, doing up buttons and special clothing including socks and slippers. Ableworld stock a variety of products to suit your needs.

# Lumbar Supports



## Designer Back Support



- Offers gentle lateral support
- Individually moulded from visco-elastic memory foam
- Contours to your body shape

SKU: 5060082307812

## Drivers Car Support



- Offers firm lateral support
- Cold cast polyurethane foam
- Gives added support for a more comfortable position

SKU: 5060008230187

## Mesh Lumbar Support



- Promotes good posture and allows airflow to keep the back cool and comfortable
- Can be used in the home or in the office

SKU: 5037409104706

## Heated Memory Foam Lumbar Support



- Feature's memory foam for added support and the luxury of a 3-setting heat function
- D-shaped so the flat back sits flush with any seat or chair
- 3 settings on the control switch (high, low, off)
- 12V DC car adaptor supplied

SKU: 5037409109206

## Back Soother Support



- Wraps around the user's body and lumbar region to support the back
- Can be used around the house, office or on a wheelchair or scooter
- Faux sheepskin and blackwatch tartan cover as standard

SKU: 5050996046563

## Lumbar Rolls



- Encourages good posture
- Fitted using an elasticated buckle strap
- Length: 28cm

SKU: 5060008230163 (D Roll, Size 4)

SKU: 5060008230071 (D Roll, Size 5)

SKU: 5050996003320 (Circular Roll)

## D-Shape Lumbar Cushion



- High density foam giving added support
- Helps prevent neck and back pain whilst improving your seating position
- Adjustable strap to help hold the cushion in place

SKU: 5037409104607

## Dorsaback



- Provides comfortable seating everywhere
- Height adjustable lumbar support and variable seating angles
- Helps with the prevention and rehabilitation of back problems and corrects poor posture

SKU: 7640112125562

## 2-Way Sculptured Support



- Designed to give cushioned comfort to the whole seating area
- Nodular foam on one side or a flat cushion on the other
- Incorporates a coccyx cut-out to provide relief to the lower back

SKU: 5050996030364

## Heat Massaging Seat Cushion



- Reduces the stress and everyday strain on your body
- Soothing heat treatment cushion
- 5-setting massage facility

SKU 5037409102494

## Padded Seat Cushion



- Contoured design increasing comfort
- High density filling helping to increase support
- Slip-resistant backing and straps helps secure the seat cushion in place

SKU: 5037409104683

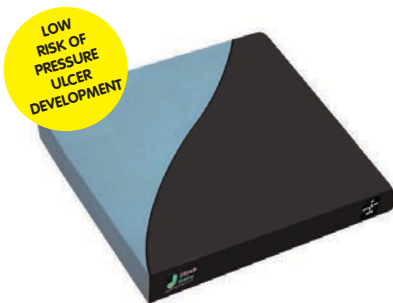
## Beaded Seat Cushion



- Wooden beading helps allow air circulation
- A padded surround is provided for added comfort
- Slip-resistant backing and adjustable strap to secure the seat cushion in place

SKU: 5037409104669

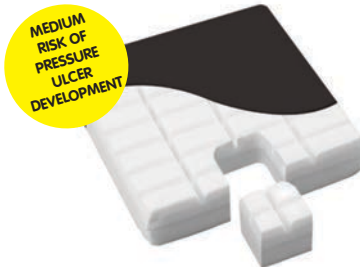
## Onyx 1 Cushion



- 2" pressure reducing foam designed for even pressure distribution
- Breathable and waterproof cover
- Reduces the possibility of fluid ingress

SKU: 5056019100595

## Onyx 2 Cushion



- 3" pressure reducing foam designed for even pressure distribution
- Supplied with a waterproof, stretchable cover with non-slip base and carry handle
- Suitable for those at medium risk of pressure ulcer development

SKU: 5056019101998  
SKU: 5055062630141 (Removable Coccyx)

## Onyx 3 Cushion



- 3" multi-layer design
- Supplied with a waterproof, stretchable cover with a non-slip base and carry handle
- Suitable for those at high risk of pressure ulcer development

SKU: 5056019102018

## Community Cushion



- A specialist pressure relief cushion developed by Ableworld
- Highly resilient, dense, pliable base foam for support and visco-elastic layer on the top
- For those who are at high risk of developing pressure sores

SKU: 5055062624799

## Memory Foam Cushion



- A comfortable wheelchair cushion with a memory foam topper
- Wipe-clean, black cover vinyl with zip
- Integrated ties secure the cushion to the wheelchair frame

SKU: 5021196699668

## Pressure Tex Cox Cushion



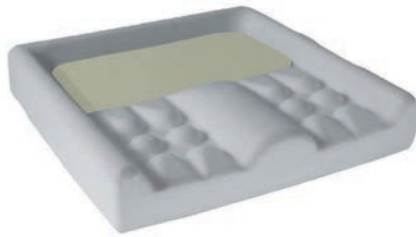
- Geometrically cut into sections operating independently allowing even weight distribution and air to circulate freely
- Keeps the skin cool and free from pressure areas

SKU: 5050996040233

# Cushions & Wedges



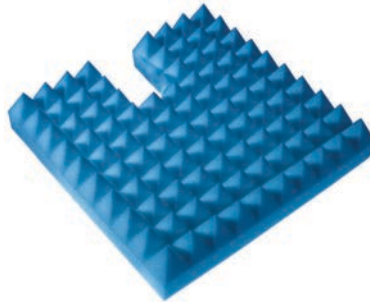
## Ergoform Cushion



- A comfortable cushion which provides medium pressure relief
- Memory foam takes the heat and weight from the user and shapes itself to the body's requirements

SKU: 5060008232631

## Proform Coccyx Cushion



- Contains integral pockets to allow air to circulate
- High profile foam helps eliminate numbness and relieves pressure points
- The coccyx cut-out relieves pressure at the base of the spine

SKU: 5050996040257

## Memory Foam/ Gel Coccyx Cushion



- Supports the coccyx area
- Added features of memory foam cushioning
- Comes with a cooling gel insert to aid comfort whilst seated
- Helps to relieve lower back pain, tail bone pain and sciatica

SKU: 5037409104782

## Gel Comfort Cushion



- Comfortable foam cushion with removable gel bag
- Ideal for use in the home, car and on wheelchairs
- Reversible cover is easy-clean black polyester and the other a soft fleece fabric

SKU: 5021196708391

## Gel Comfort Seat



- Provides comfort when sitting for long periods
- Gel layer helps keep you cool
- Ideal for year-round use in the home or car, can also be used on wheelchairs
- Removable cover is washable

SKU: 5021196791027

## Nodular Ring Cushion



- Takes pressure away from areas prone to sore spots, making sitting more comfortable
- Nodular shape polyurethane foam allows air to circulate freely
- Ideal for post-operative trauma and haemorrhoids

SKU: 5050996040455

## Designer Ring Cushion



- Allows the user to sit for longer periods without any interrupting blood flow
- The moulded visco-elastic memory foam offers increased comfort and pressure relief

SKU: 5060008232334

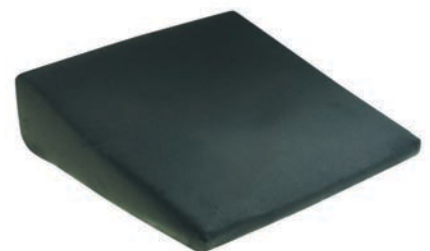
## Slimline Wedge



- Allows sitting for long periods with the pelvis tilted correctly and the spine in its natural position
- Helps to significantly decrease pain and ease muscle tension

SKU: 5060008230101

## Coccyx Wedge



- Decreases pain in the lower back and legs
- Tilts the pelvis to the optimum 11 degrees which keeps the spine in its natural position
- Incorporates a coccyx cut-out

SKU: 5060008230507



## Designer Coccyx Wedge



- A comfortable wedge which helps to distribute weight evenly
- Incorporates a coccyx cut-out to provide relief to the lower back
- It's 8-degree angle maintains the natural 's' shape of the spine

SKU: 5060008230231

## Leg Trough



- Allows sitting for long periods with the pelvis tilted correctly and the spine in its natural position
- Helps to significantly decrease pain and ease muscle tension

SKU: 5060008231344

## Spinal Leg Raiser



- Takes pressure off the lower back
- Stimulates circulation to relieve back pain and other symptoms
- Size: 46 x 63 x 17 x 12cm

SKU: 5060008230286

## Elastic Shoe Laces



- Ideal for people who find it difficult reaching or tying laces
- Available in black
- Length: 81cm
- Sold in packs of 3

SKU: 4713280205091

## Dressing Stick



- A large 's' shaped hook at one end and a shoe horn at the other, enabling you to both pull on and push off clothing and put shoes on with ease
- Particularly popular with those who have limited mobility

SKU: 5021196758259

## Button Hook



- Assists in pulling buttons through the button holes and fastening zips
- Plastic handle makes those fiddly jobs much easier
- Length: 20.5cm

SKU: 5055062607891

## Shoehorn



- Conventional shaped shoehorn
- Incorporates a hook for positioning of shoes
- Prevents the need to bend down
- Available in two lengths: 40 or 53cm

SKU: 5055062607495 (40cm)

SKU: 5050962084919 (53cm)

## Long Steel Shoehorns

Long Steel Shoehorn



Extra Long Steel Shoehorn



- A metal chrome finish shoehorn
- Prevents the need for bending down
- Easy grip handle and a handy hanging loop

Long - SKU: 5055062607860 (59.5cm) Extra Long - SKU: 5055062619245 (61cm)



## Hip Packs



- The Economy Hip Pack contains: 26" Classic Pro Reacher, Foxy Sock Aid, Shoehorn and an everyday sponge • Supplied complete in a carry bag for ultimate convenience and portability • Ideal for those with a limited range of movement

**Economy Hip Pack - SKU: 5050962190054**



- Helps to manage those everyday tasks
- Includes: 26" Classic Pro Reacher, Soxon sock aid, shoehorn, toe and foot sponge.
- Supplied in a carry bag
- Ideal for those with limited range movement

**Hip Pack - SKU: 5050962190054**

## Long Reach Toe Nail Cutter



- The long-looped handle on this product allows the strength and control of the whole hand to be used • The angled blade provides a good cutting angle
- Ideal for people who have difficulty bending

**SKU: 5050996011592**

## Pantyhose Aid



- Lightweight and easy to use • Simply fit the tights over the aid, slip your feet in and sue the straps to pull them up • Prevents the need for bending
- Fits any size of tights

**SKU: 4713280205305**

## Long Handled Brush & Comb



- Anti-slip handle aids grip providing maximum grip with minimal effort
- Latex free long handles
- A hoop in the handle allows it to be hung up for storage
- Ideal for those with mobility restrictions or flexibility
- Each sold separately

**SKU: 779709014426 (Brush)**  
**SKU: 779709014419 (Comb)**

## Sock Helper



- Designed to help put socks, compression stockings and hosiery • Avoids any unnecessary bending at the waist or hips
- Portable and simple to use

**SKU: 4713280205312**

## Soxon Sock Aid



- Easy and simple to use • Roll the sock or stocking on, drop to the floor and wriggle your toes in then pull up on the loops
- The towelling liner allows easy travel over foot and ankle while ensuring a wrinkle free sock

**SKU: 5050962080607**

## Sock Aid



- Easy and simple to use • Roll the sock or stocking on, drop to the floor and wriggle your toes in then pull up on the loops
- Avoids any unnecessary bending at the waist or hips

**SKU: 779709020120**

## Andrea



- A wide fitting slipper
- Has a velcro adjustable fastening and an outdoor sole
- Machine washable

SKU: 5055062609178 (Size 3) SKU: 5055062622733 (Size 4)  
 SKU: 5055062622740 (Size 5) SKU: 5055062622757 (Size 6)  
 SKU: 5055062622764 (Size 7)

## Celia



- A wide fitting versatile canvas slipper
- Designed to open out for easy access
- The insole can also be removed to provide a wider fitting

SKU: 5038600142795 (Size 4) SKU: 5038600142801 (Size 5)  
 SKU: 5038600142818 (Size 6) SKU: 5038600142825 (Size 7)  
 SKU: 5055062628247 (Size 8)

## Celia Ruiz



- Perfect for feet that need some extra room
- Adjustable design to accommodate for swelling
- Two touch-fasten front straps make them easy to put on

SKU: 5038600142658 (Size 4) SKU: 5038600142665 (Size 5)  
 SKU: 5038600142672 (Size 6) SKU: 5038600142689 (Size 7)  
 SKU: 5038600142696 (Size 8)

## Nola



- An extra wide fitting slipper with high toe clearance
- Ideal for swollen ankles
- Velcro adjustable support, soft velour upper and outdoor sole

SKU: 5055062609192 (Size 3) SKU: 5038600023056 (Size 4)  
 SKU: 5038600023063 (Size 5) SKU: 5038600023070 (Size 6)  
 SKU: 5038600023087 (Size 7)

## Fife



- An attractive casual slipper
- Offers easy foot entry and comfort
- The tongue opens all the way to toes for easy access

SKU: 5038600023001 (Size 4) SKU: 5038600023018 (Size 5)  
 SKU: 5038600023025 (Size 6) SKU: 5038600023032 (Size 7)  
 SKU: 5055062628223 (Size 8)

## Rhona



- Ideal for swollen ankles
- Provides endless comfort
- Extra wide fit for added comfort and ease of change

SKU: 5038600022943 (Size 4) SKU: 5038600022950 (Size 5)  
 SKU: 5038600022967 (Size 6) SKU: 5038600022974 (Size 7)  
 SKU: 5038600022981 (Size 8)

# Men's Slippers & Footcare



## Bill



- A wide fitting slipper
- Ideal for swollen ankles
- Has touch velcro fastening straps so they can be opened wide so feet can slide in easily

SKU: 5038600023209 (Size 7) SKU: 5038600023216 (Size 8)  
 SKU: 5038600023223 (Size 9) SKU: 5038600023230 (Size 10)  
 SKU: 5055062624744 (Size 11)

## Brompton



- A comfortable, practical and lightweight slipper • Ideal for swollen feet • Has touch velcro fastening straps so they can be opened wide so feet can slide in easily • Feature anti-bacterial treatment which helps to reduce the development of bacteria and odour • They are washable at 30 degrees

SKU: 5038600191793 (Size 7) SKU: 5038600191809 (Size 8)  
 SKU: 5038600191816 (Size 9) SKU: 5038600191823 (Size 10)  
 SKU: 5038600191847 (Size 11)

## Torbay



- Lightweight and slip-resistant • Both luxuriously comfortable and highly practical • Has touch velcro fastening straps so they can be opened wide so feet can slide in easily
- Feature anti-bacterial treatment which helps to reduce the development of bacteria and odour

SKU: 5038600191281 (Size 7) SKU: 5038600191298 (Size 8)  
 SKU: 5038600191304 (Size 9) SKU: 5038600191311 (Size 10)  
 SKU: 5038600191335 (Size 11)

## Walton



- Lightweight and slip-resistant • Has touch velcro fastening straps so they can be opened wide so feet can slide in easily • Feature anti-bacterial treatment which helps to reduce the development of bacteria and odour

SKU: 5038600191465 (Size 7) SKU: 5038600191472 (Size 8)  
 SKU: 5038600191489 (Size 9) SKU: 5038600191496 (Size 10)  
 SKU: 5038600191519 (Size 11)

## Arch Insoles



- Made from patented polyurethane foam which keeps feet cooler and drier
- They won't develop an odour even after extended use
- Built in arch support for foot alignment

SKU: 4719863696591 (Small) SKU: 4719863696607 (Medium)  
 SKU: 4719863696614 (Large)

## Silicon Insoles



- These insoles use two different silicone densities which absorb the impact on the ankle joint, knee and hip
- They help to regulate the distribution of pressure which is exerted by the weight of the body on the foot

SKU: 4719863694665 (4-5) SKU: 4719863694672 (5½-6½)  
 SKU: 4719863694689 (7-8) SKU: 4719863694696 (8½-9½)  
 SKU: 4719863695006 (10-12)

## Memory Foam Insoles



- A pair of memory foam insoles, which mould to your feet to relieve pressure on the ball of your foot and heel, cushioning every step
- Suitable for men (size 6 to 11) and women (size 2 to 8)

SKU: 5021196664901

## Heel Pads



- Designed to dissipate heel strike shock and help reduce stress and strain on the ankle, knee and lower back
- Helps to prevent injury resulting from torque, step shocks of the foot against hard floor surfaces during sports activities or being on your feet for an extended period of time

SKU: 4717566312155 (S) SKU: 4717556312254 (M)  
SKU: 4717556312353 (L) SKU: 4717556312452 (XL)  
SKU: 4717556312551 (XXL)

## Heel Cups



- Provides maximum shock absorption and support to aid foot pain, foot fatigue, heel pain syndrome or heel spur indications
- Ergonomic design with a soft zone for heel cushioning, helping to reduce hard skin build up as well as relieve pressure
- Sold as a pair
- UK size 6-8

SKU: 5021196733614 (Gel) SKU: 5021196733553 (Silicone)

## Bunion Aider



- An elasticated sleeve with a gel pad which is worn over the toes providing cushioning and protective padding
- Discreet design for wearing under socks and hosiery
- Can be worn on either foot
- Ideal for everyday use
- Universal size

SKU: 5021196734420

## Gel Toe Separators



- Designed to relieve pain, pressure and friction between toes
- Cleverly designed to fit comfortably between toes, the separators help correct overlapping toes by cushioning, dividing and aligning
- Latex free and hypo-allergenic
- Sold as a pack of 15
- UK size 6-8

SKU: 5021196734109



AT  
EXEMPT  
& RELIEF

Are you eligible  
for VAT Relief?  
See page 2 for details



## Diabetic Cotton Socks



These Diabetic friendly socks work like regular socks but have an incorporated stretch technology which gives 50% more stretch across the entire socks. Features a soft easy top, flat toe seam, extra-thermal properties and an anti-bacterial finish. Material: 80% Cotton, 18% Polyamide and 2% Elastane. Available in 3 colours and 3 sizes. Small UK Size 3-5. Medium UK Size 6-9. Large UK Size 10-13.

**Black:**  
SKU: 8680081431485 (Small) SKU: 8680081431492 (Medium) SKU: 8680081431508 (Large)  
**Oatmeal:**  
SKU: 8680081431577 (Small) SKU: 8680081431584 (Medium) SKU: 8680081431591 (Large)  
**Navy:**  
SKU: 8680081431546 (Small) SKU: 8680081431553 (Medium) SKU: 8680081431560 (Large)

## Diabetic Wool Socks



These Diabetic friendly socks work like regular socks but have an incorporated stretch technology which gives 50% more stretch across the entire socks. Features a soft easy top, flat toe seam, extra-thermal properties and an anti-bacterial finish. Material: 30% Wool, 52% Polyamide and 18% Acrylic. Available in 3 colours and 3 sizes. Small UK Size 3-5. Medium UK Size 6-9. Large UK Size 10-13.

**Black:**  
SKU: 8680081431362 (Small) SKU: 8680081431379 (Medium) SKU: 8680081431386 (Large)  
**Oatmeal:**  
SKU: 8680081431454 (Small) SKU: 8680081431461 (Medium) SKU: 8680081431478 (Large)  
**Navy:**  
SKU: 8680081431423 (Small) SKU: 8680081431430 (Medium) SKU: 8680081431447 (Large)

## Oedema Wide Fitting Socks



These Oedema friendly extra wide socks work like regular socks but have an incorporated stretch technology which gives 70% more stretch across the entire socks. Features a soft easy top, flat toe seam, extra-thermal properties and an anti-bacterial finish. Material: 63% Acrylic, 27% Wool, 10% Polyamide. Available in 3 colours and 3 sizes. Small UK Size 3-5. Medium UK Size 6-9. Large UK Size 10-13.

**Black:**  
SKU: 8680081431126 (Small) SKU: 8680081431133 (Medium) SKU: 8680081431140 (Large)  
**Oatmeal:**  
SKU: 8680081431218 (Small) SKU: 8680081431225 (Medium) SKU: 8680081431232 (Large)  
**Navy:**  
SKU: 8680081431188 (Small) SKU: 8680081431195 (Medium) SKU: 8680081431201 (Large)

## Oedema Knee High Socks



These Oedema friendly extra wide socks work like regular socks but have an incorporated stretch technology which gives 70% more stretch across the entire socks. Features a soft easy top, flat toe seam, extra-thermal properties and an anti-bacterial finish. Material: 63% Acrylic, 27% Wool, 10% Polyamide. Available in 3 colours and 3 sizes. Small UK Size 3-5. Medium UK Size 6-9. Large UK Size 10-13.

**Black:**  
SKU: 8680081431249 (Small) SKU: 8680081431256 (Medium) SKU: 8680081431263 (Large)  
**Oatmeal:**  
SKU: 8680081431331 (Small) SKU: 8680081431348 (Medium) SKU: 8680081431355 (Large)  
**Navy:**  
SKU: 8680081431300 (Small) SKU: 8680081431317 (Medium) SKU: 8680081431324 (Large)



# Healthcare

Sometimes we need a helping hand to ensure we stay fit and healthy. It could be help organising medication or something for gentle exercise to help us feel better. Ableworld stock a variety of products from hot and cold products that help relieve pain, to lighting and magnifying items to help you focus on the smaller things in life.

We also have watches, badge holders and blood pressure monitors to name a few. We have a variety of products to help you lead a happy and healthy life.

# Medication Management



## Weekly Pill Dispenser



- Reminder to take your medication with one clearly labelled compartment per day
- Features braille for identification for each day's compartment
- Has easy-to-use flip top lids for each day

**SKU: 5021196669241 (Small)**  
**SKU: 5021196669258 (Large)**

## Multi Pill Dispenser



- Ideal for people who take medication throughout the day • 4 clearly marked compartments for each day • Each interval marked clearly in text and braille
- Ideal for people with visual impairments as its bright

**SKU: 5021196717614**

## Week-Day Pill Dispenser



- Has four clearly marked compartments for each day of the week • Ideal for people who take larger numbers of tablets, more frequently each day • Individual compartments can also be removed for easy transportation

**SKU: 4713280200287**

## One Month Pill Organiser



- Sort your tablets up to one month in advance • 32 brightly coloured compartments divided into AM and PM
- Sections clip neatly into base for storage

**SKU: 5021196717607**

## Pill Box Reminder/Timer



- Pocket size pill box with neck cord
- Gives an audible alarm and a flashing light when medication is due • Features a timer which can be set for up to 19 hours and 59 minutes • Uses 1 x 1.5V button cell battery (included)

**SKU: 4891463100859**

Delivery direct to your home can be arranged

Call your local store for more information.

## Tablet Aids



### Tablet Crusher

- An easy-to-use 'grind mill' for medication • The screw top turns to crush the tablets into powder • Spare tablets can be stored in the compartment in the lid • Easy to clean

**SKU: 5037409109206**



### Pill Puncher

- Removes medication from blister packaging
- Convenient and easy to use

**SKU: 4713280200195**



### Tablet Splitter

- Divides tablets in half for storage in small doses or for easy swallowing • Tablets can be stored in the front of the tray
- Not suitable for capsule tablets

**SKU: 4713280200188**

## Hand Grip Exerciser



- Can be used to develop strength in the wrist and forearm • It has an anti-slip grip • Intensity/resistance is easily adjusted
- Resistance Range: 2-15kg

**SKU: 7640112124879**



## Fun & Active Bands



- An exercise band which is extra tough and has a pleasant texture
- Can be used to build up strength and increase mobility
- Latex free

**Strength: Soft (Orange)**  
**Strength: Medium (Yellow)**  
**Strength: Strong (Green)**

SKU: 7640112124589 (Orange)  
 SKU: 7640112124596 (Yellow)  
 SKU: 7640112124602 (Green)

**RANGE OF STRENGTHS AVAILABLE**

## Exercise Loops



- Set of two, latex resistance bands
- Ideal for progressive muscle build up
- Small, handy, ready to use anywhere
- Ideal tool for use in fitness or rehabilitation

SKU: 4250694703152

## Spiky Massage Ball



- To be used for a gentle stimulating massage
- Comes with a valve and is made of one piece
- Relieves tension and promotes blood circulation
- Easily transportable

SKU: 4250694700182

## Theraputty



- A putty which provides therapy for fingers and hands
- Used for rehabilitation and to maintain flexibility
- Ideal for use after surgery, injuries of the hand or rheumatic ailments
- Size: 85gm tub

**Strength: Soft (Yellow)**  
**Strength: Medium (Red)**

SKU: 7640112121953 (Yellow)  
 SKU: 7640112121939 (Red)

**RANGE OF STRENGTHS AVAILABLE**

## Twin Spiky Roller



- Great for an effective and easy body massage at home
- It works by simply rolling it over areas of the body where there is muscular tension
- Supports the circulation and stimulates metabolism
- Also suitable for foot reflexology

SKU: 4250694701745

## Press Egg



- A solid foam egg which works all muscles in your hand and fingers
- Improves the mobility of the hand and forearm
- Ideal for hand rehabilitation

**Strength: Soft (Pink)**  
**Strength: Medium (Blue)**  
**Strength: Strong (Green)**  
**Strength: Extra Strong (Orange)**

SKU: 7640112122684 (Pink)  
 SKU: 7640112122691 (Blue)  
 SKU: 7640112122707 (Green)  
 SKU: 7640112122714 (Orange)



**RANGE OF STRENGTHS AVAILABLE**



## Yoga Blocks



- A lightweight, foam yoga block suitable for yoga novices and experts
- The block can be used as a balance testing aid or to help target particular areas by elevating the back, hips or shoulders

SKU: 7640112124565

## Garden Kneeler



- A multi-use gardening aid that folds neatly for storage
- Can be used as a portable seat or padded kneeler
- When inverted and used as a garden kneeler, legs of the bench act as handles to assist you in getting up and down

SKU: 5055062610280

## Pedal Exerciser



- An economical and compact home exerciser
- Helps to restore muscle strength, circulation and co-ordination to the lower and upper extremities
- Durable and easily stored

SKU: 5021196694618

## Digital Pedal Exerciser



- Ideal for rehabilitation, fitness and keeping limbs moving in the home
- Inbuilt digital display screen
- Folds for easy storage
- Battery included (AG13 button battery)

SKU: 5021196736165

## Talking Digital Watch



- Talking function with clear analogue face
- Voice announcement of the time and date
- Automatically adjusts between summer and winter
- Battery included

SKU: 4891463104413

## Talking Big Digit Watch



- A talking watch with an extra-large LCD which shows the date and time
- Features an hourly time announcement and four alarms for medication reminders
- Stopwatch with talking feature
- Includes 1 x CR2016 lithium battery

SKU: 4891463103218

## Talking Atomic Watch



- Talking function with clear analogue face and hands
- Voice announcement of time and date
- Automatically adjusts between summer and winter time
- Setting button flush with case to prevent accidental activation

SKU: 4891463103072 (Men's)  
SKU: 4891463104185 (Ladies)

## Vibrating Alarm Clock



- Ideal for those who are hard of hearing or have sight limitations
- Place under your pillow and the alarm will wake you by vibrating
- Temperature display, snooze and backlight features

SKU: 4891463100835

## Talking Alarm Clock



- Easily to read analogue face and digital display
- Great for the blind or visually impaired
- Speaking function

SKU 4891463102211



## Day/Date Wall Clock

Dementia Friendly



- Great aid for anyone living with Dementia • Clear numbers and distinct hands, making it easy to read • Displays the day, date and month in UK format

SKU: 5060407840796 (High Contrast)  
SKU: 5060407840789 (Clear)

## Cool Pad Pillow



- Ideal for headaches, sunburn, hot feet, hot flushes or just to cool down
- Suitable to combat high temperatures or increases body heat due to medication
- Size: 30 x 40cm

SKU: 4891463103966

## Cooling Gel Mat



- Creates a cooling and dry sensation allowing user to fall asleep in comfort
- Ideal to soothe sunburn or to cool you down on a warm night • Can be placed in the refrigerator

SKU: 5021196793724

## Mini Mist Fan



- Helps to keep you cool in the hot weather
- Comes with USB charging and 8 hour running time
- Portable and light

SKU: 5060407840857

## Rechargeable Mighty Fan



- Helps to keep you cool during those warm days and nights • Comes with USB charging and 8 hour running time
- Quiet and compact perfect for carrying around

SKU: 5060407840109

## Cherry Heat Pad



- Dry warming bottle using cherry stones for natural heat • Designed to be heated in the oven/microwave to provide comfort from aches and pains • The cherry stones provide gentle massage
- Size: 23 x 26cm

SKU: 5055062610112

## Linum Hot Pad



- Provides pleasant relief where warmth is required • Tri-sectional design fits the neck and shoulder region • Can be used to treat muscle tensions, stomach pains and disposition due to cold
- Size: 37.5 x 36cm

SKU: 7640112123971

## Soft Touch Hot/Cold Pad



- Provides pleasant relief where a warm or cold compress is required • Tri-sectional design fits the neck and shoulder region
- Remains soft at all times and is easy to clean and keep hygienic • Size: 20 x 40cm

SKU: 7640112121014

## Heated Lap Blanket



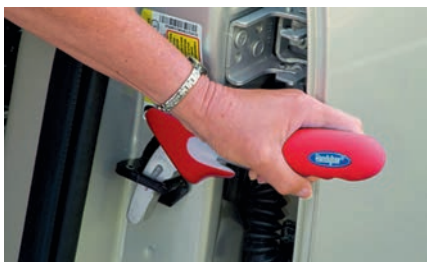
- A heated blanket powered by either a mains socket or a lighter socket
- Helps to improve circulation, relieve muscle pain and help rebuild injured tissue
- Cable Length: 2.8 metres
- Size: 85 x 44cm

SKU: 4891463104895

See our Product Video:  
[youtube.com/Ableworld](https://www.youtube.com/Ableworld)



## Handybar



- Helps you get in and out of your vehicle easily and comfortably • Soft grip, non-slip handle • Incorporates a seat belt cutter and glass breaker to help leave the vehicle in case of an accident
- Fits the majority of vehicles with a 'u' shaped striker

SKU: 5050996007496



## Car Handle



- Perfect for helping you to get in and out of the car • Includes a non-slip grip to give that extra support and a seat belt cutter • Comes with a window breaker to assist in emergencies and LED flashlight

SKU: 5037409098166

## Steering Aid



- Simply clamps onto a car steering wheel • Designed to help with safe and comfortable driving by facilitating easy parking and increased manoeuvrability • It is compatible with most steering wheels

SKU: 5037409099699

## Disabled Sticker



SKU: 5037409055213  
(Disabled Sticker)



SKU: 5037409112886  
(Access Required Sticker)

- Designed to stick on the outside of a vehicle to let other car users know that space is required at the rear/side of a vehicle for a wheelchair or other mobility aid
- Easy to fit with good adhesion

## Blue Badge Holder



- Stylish black leather and compact
- Protects your badge/timer and keeps it in excellent condition • Complies with the department of transport guidelines

SKU: 5055785714548

## Hearing Amplifier



- A tiny hearing amplifier that hides behind the ear • Lightweight, convenient and comfortable to wear • Adjustable volume and tone controls • Full CE certification as a class 11A medical device

SKU: 4891463103942

## Universal Handles



- Helps to reduce discomfort for people holding small objects • Suitable for holding cutlery, toothbrush and other everyday objects • Sold in a pack of 2

SKU: 4713280201376

## Writing Grip



- A built-up finger grip with a flexible cushion offering a comfortable writing position • Suitable for both pens and pencils • Sold in packs of 3

SKU: 5055062607907



## Floor & Table Lamp

- These reading lamps boasts optimum natural daylight levels (6,500k daylight) and are an economically friendly option at just 27w
- Available as floor standing or table top these lights are an ideal companion for everyday activities such as reading, writing, along with more specific duties such as craft hobby work

### Floor Lamp

Height: 160cm • Cord Length: 175cm

### Table Lamp

Height: 66cm • Cord Length: 175cm



Table Lamp

Floor Lamp

SKU: 5021196783466 (Floor Lamp) SKU: 5021196783459 (Table Lamp)

## LED Floor & Magnifier



- An energy saving lamp with a magnifier
- The flexible arm allows you to direct the light and magnifier into the optimum position for reading or hobbies • Includes 12 bright white LED lights • 2 x magnification with a 5 x bifocal inset

SKU: 729578671824

## LED Floor & Table Lamp

- Generating over 400 lumens of light with a colour temperature equivalent to noon daylight
- The versatile gooseneck allows you to shine the light exactly where you need it
- Features a touch control with three stage dimming

### Floor Lamp

Height: 155cm

### Table Lamp

Height: 38cm



Table Lamp

Floor Lamp

SKU: 5060407840628 (Floor Lamp) SKU: 5060407840598 (Table Lamp)



## FREE Home Visit

We can carry out a no obligation assessment in the comfort of your own home on certain products.

## Magnifying Table Lamp



- The flexible arm allows you to direct the light and magnification into the optimum position for reading or hobbies • Helps to relieve eyestrain and headaches
- Height: 40cm • Cord Length: 120cm

SKU: 4891463104079

## SAD Light Therapy Lamp



- Mimics natural sunlight to help lift your mood and well-being • Supplements your daily intake of light in order to achieve the recommended daily dose of 2,500 to 10,000 lux • It's modern shaping and simple design takes inspiration from the sun • With industry leading 10 stage dimming and a 4 stage timer, all controlled from three simple buttons

SKU: 5060407840802



## 2 Way Light Wand



- A super bright LED light wand • One touch on/off button • Ideal for lighting up dark cupboards and corners
- Battery operated

SKU: 4891463104215

## LED Tap Lights



Tap Light

SKU: 5060195207177 (Tap Light)

Tap Light with Timer



- 3 super bright LED lights which can be turned on and off with a simple tap • Easy to install and fittings come included • Ideal for placing in multiple locations • Requires batteries (not included) • Tap Light with Timer allows the light to turn on for 1, 5 or 15 minutes at a time

SKU: 5060195207191 (Tap Light & Timer)

## LED Nightlight & Torch



- The nightlight automatically turns on during hours of darkness • The torch also automatically turns on when the power goes out when charging • Features a 4-position push button (high/low/flash/off)

SKU: 5060195207146

## Nitesafe Sensor



- A highly useful emergency torch and nightlight that is always charged • 10 LED torch sit in a charging base plugged into the wall • Motion sensor detector turns on the nightlight as soon as movement is detected

SKU: 5060195207009

## 2 Way Lighted Magnifier



- A magnifier which keeps both hands free when it is used with the supplied adjustable neck cord • It has a built-in light with an on/off switch • 1.5 x magnification with small 4 x magnification area

SKU: 4891463100699

## Deluxe Illuminated Magnifier



- Six high output LED lights for reading, hobbies, crafts and maps • Ideal for travel or poor lighting • Battery operated (not included)

SKU: 5021196663492

## Lighted Pendant Magnifier



- LED lighted pendant magnifier with neck strap
- Compact and ideal for use when travelling
- 2 x magnification

SKU: 729578877127

## Pendant Magnifier



- An attractive pendant magnifier in a gold tone finish with matching necklace • Ideal for reading labels and hobbies • 5 x magnification

SKU: 4891463104499



## Wallet Magnifier



- An energy saving lamp with a magnifier
- The flexible arm allows you to direct the light and magnifier into the optimum position for reading or hobbies
- Includes 12 bright white LED lights
- 2 x magnification with a 5 x bifocal inset

SKU: 729578870227

## Ableworld Magnifier



Lighted

- A handy magnifier perfect for storing in wallets or purses, ideal for reading small print
- 3 x magnification
- Lighted version comes with an LED light and plastic cover case

SKU: 5055062635559 SKU: 5055062635566 (Lighted)



## Lighted Pop Up Magnifier



- Brings details into sharp relief
- Ideal for those who need little details twice as big
- 6x bifocal

SKU: 729578860129

## Lighted Seam Ripper



- Lighted seam ripper which quadruples the image size of blade and stitch
- Enlarged area is brightened by an energy-efficient LED
- Ergonomically shaped handle offers a comfortable grip

SKU: 729578885122

## Rigid Page Magnifier



- A rigid full page size magnifier
- Made from unbreakable plexiglass
- Sturdy and portable
- 2 x magnification

SKU: 729578880196

## Sheet Magnifier

- A handy flat magnifier which can be easily positioned to magnify whole pages at one time
- Features a soft-touch frame for easy positioning and comfort
- Ideal for magnifying text, small print, maps and documents
- Magnification is approximately x 2 allowing for more comfortable reading without squinting or hurting your eyes



SKU: 4713280206296

## Ruler Magnifier



- A magnifying ruler that collects light to brighten the viewing area
- Lay it directly on top of printed material for sharp, distortion-free view
- Sturdy and portable
- 2 x magnification

SKU: 729578368014

# What our Customers are saying about us

We are so lucky to have great customers who are quick to tell us when we have done a good job. Ableworld receive numerous testimonials every week. Here are just a few of them:-

## **Ableworld Stockton – 5\* Trustpilot Review**

"Excellent service at my Stockton branch and good advice from the staff. Would recommend this store to anyone seeking help or advice on purchasing any kinds of disabled mobility products. Very helpful and informative and a pleasure to visit the store at Stockton"

**C. Threnholme**

## **Online Ordering – 5\* Trustpilot Review**

"Easy to order from website. I ordered it from Australia for my dad in the UK with no problem. Prompt delivery. My dad is delighted with the product"

**C. Webster**

## **Ableworld Broxburn – 5\* Facebook Review**

"I love my stairlift! The freedom I have now is magic! Before I dreaded having to go upstairs because of the stress it gave me, now I have my confidence again. Thank you for excellent service!"

**I. McKenna**

## **Ableworld Llandudno – 5\* Facebook Review**

"Thank you to all the team today for excellent service. Placed my order for an armchair Saturday night, shop phoned me Sunday morning and delivered to my mum in Llandudno an hour later. Amazing! Quicker and better service than Prime! Well done - a real credit to yourselves and mum is delighted with her new chair!"

**D. Barber**



## **Ableworld Birkenhead – 5\* Trustpilot Review**

"Whenever I visit or contact the Birkenhead store the staff are always really helpful and positive. The quality of items sold are a high standard and if the store don't have what you're looking for they will try and access the equipment for you. A wonderful store and a big thank you to all the staff who work there!"

**P. Bruce**

## **Ableworld Southampton – 5\* Facebook Review**

"Very helpful and friendly staff, definitely know about disability issues and their needs, no rushing, time wasn't an issue, would definitely use again!"

**A. O'Connell**

## **Ableworld Crewe – 5\* Facebook Review**

"Thank you Ableworld Crewe! We visited for help and advice on a mobility scooter. The knowledge on the product was very informative and the member of staff who served us was very friendly and helpful. It was a good experience and we wouldn't hesitate to recommend the store and staff. Thanks again!"

**A. Cooper**

## **Ableworld Wavertree – 5\* Yelp Review**

"We use the Wavertree shop regularly, the staff are amazing and go above and beyond helpful! Good value and excellent quality for all products. The staff really care about the service they give and their customers."

**W. Lynn**

## **Ableworld Chester – 5\* Which? Trusted Trader Review**

"Fitted last week - 3 days after ordering. Engineer was friendly and explained it well. Couldn't fault them!"

**Brian**







# Household

Sometimes it's the silly little things that can present the biggest problems and we understand perfectly just how infuriating that can be. That's why at Ableworld we sell products which help make household activities that much simpler.

From Grab rails to Reachers, Overbed Tables to Anti-slip mats, here at Ableworld we listen to our customers needs.

# Grab Rails



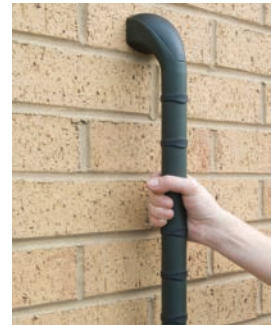
## Plastic Fluted Grab Rail



- An attractive durable grab rail
- Constructed from UPVC, the tube is ribbed for improved grip
- Circular fixing plates and covering discs included
- Available in three lengths - 12", 18" and 24"

SKU: 5055062608249 (12") SKU: 5055062608256 (18") SKU: 5055062608263 (24")

## Outdoor Grab Rail



- A high-quality outdoor grab rail
- Fully weather resistant and non-rusting
- Slip-resistant even when wet
- Length: 45cm

SKU: 5038948202595



### Click and Collect

Visit [www.ableworld.co.uk](http://www.ableworld.co.uk) to reserve your item for collection at any one of our Ableworld stores

## Steel Grab Rail



- A plastic-coated steel grab rail with flat ends fixings which are designed to fit flat against the wall
- Simple to install with two fixings points on each flange
- Rounded ends mean no sharp corners, offering improved user safety
- Available in four lengths - 12", 18", 24", 28"

SKU: 5055062608300 (12") SKU: 5055062608317 (18")  
SKU: 5055062608324 (24") SKU: 5055062608331 (28")

## Red Grab Rails

DEMENTIA FRIENDLY



- Designed to help you see and recognise a safe and secure support rail
- Great aid for someone living with Dementia or visual impairment
- Made from high quality and durable plastic this product helps to reduce the risk of falls
- With a ribbed surface with a non-slip texture to provide extra support, even when wet
- Available in three lengths - Angled, 18" and 24"

SKU: 5055785710670 (Angled)  
SKU: 5055785710687 (18")  
SKU: 5055785710694 (24")

## Stick 'N' Stay Handle

- A high-quality grab rail with locking suction cups
- Sticks to any tilted, enamel or fibreglass surface
- Patented green/red indicator to show adhesion status
- Quick and easy to fit, no tools required
- Available in two lengths - 40cm and 50cm



SKU: 4891463102822 (40cm)  
SKU: 4891463102839 (50cm)

## Dual Point Grab Rail



- Can be used on any flat, non-porous surface
- Featuring lockable suction cups allow it to be sealed to a surface without the need for screws or other fixings
- Provides a secure and reliable grip when getting in and out of the bath or rising from the seat of the toilet

SKU: 5021196734055

## Prima Grab Rail

- This product features an ergonomic handle that is easy to grip onto
- Provides a strong support and helps to reduce the risk of falls
- Ideal for many areas in your home, this grab rail can be mounted in any direction
- Made from reinforced aluminium tube covered in one piece of moulded plastic
- Available in two lengths - 12" and 18"



SKU: 5016181000864 (12", White) SKU: 5016181065092 (12", Mint)  
SKU: 5016181000888 (18", White) SKU: 5016181065115 (18", Mint)

## Dual Rotating Grab Rail



- Release levers make installing and removing quick, easy and very simple
- Ideal for use in baths and showers and is perfect for taking when travelling
- Tool-free installation and removal

SKU: 822383246529

## Drop Down Grab Rail

- Aids standing and sitting in the bathroom
- Comfortable to grasp and gives a much broader support area
- Supporting leg increases the maximum user weight and reduces strain on the wall
- When not in use it can be folded against the wall



SKU: 5055062614875 (Rail) SKU: 5055062614868 (Rail & Leg)

## Quick Suction Grab Rail



- Provides stability when getting in and out of the bath or shower
- Provides a non-permanent support solution
- Can be locked in place or removed within seconds

SKU: 5021196716583

# Furniture Raisers & Tables



## Furniture Raisers

Furniture Raisers



- Can be used on chairs, armchairs and divan beds
- Simple to use
- Large base ensures stability
- Maximum User Weight: 78 stone

SKU: 5055062624607 (Furniture Raisers)



Link Arm Assembly

- To be used in conjunction with furniture raisers
- Designed to give additional stability and security
- The aluminium arms are strong, light and can be machine cleaned
- Maximum User Weight: 78 stone

SKU: 5055062609611 (Link Arm Assembly)

## Elephant Feet Furniture Raisers



- Cone shaped grey raisers with non-slip pads
- Fit easily under existing furniture legs
- Supplied in a set of 4

SKU: 5016181060707 (9cm)

SKU: 5016181060745 (14cm)

## Overbed Tables

2 Castor



- A convenient table for use around the home
- Simple to adjust and can be set at any height from flat to approximately 45 degrees
- Has the benefit of legs which can be used with deep base divan beds

SKU: 5055062615056 (2 Castor)

4 Castor



SKU: 5055062619481 (4 Castor)

## Deluxe Overbed Table



- Features a tilting table and a side table that remains horizontal
- Ideal for many activities including reading, eating and crafts
- Suitable for use with most beds
- Height adjustable from 74-90cm

SKU: 5055062623921

## Overchair Table



- Features a tilting table to allow you to sit back and relax
- Wide base means that it can be easily manoeuvred into place
- Perfect for reading, eating or doing crafts
- Ideal for use over an armchair
- Height adjustable from 69.5-84.5cm

SKU: 5050996010656

## Adjustable Table



- Ideal to be used over the arms of your favourite chair or over your single bed
- Height and width adjustable, as well as having a handy tilting option ensuring you can continue to do the things you love from the comfort of your chair or bed

SKU: 5038948668322

To find your local store



See back of the catalogue or visit [www.ableworld.co.uk](http://www.ableworld.co.uk)

## Classic Reachers

Classic Standard

Classic Long

Classic Folder Short



- A multi-purpose reacher which is ideal for picking up every day items around the home
- Ideal for people with Arthritis and limited hand dexterity
- Prevents the need for bending and overreaching

SKU: 5050962170872 (Short) SKU: 5050962172982 (Standard) SKU: 5050962172999 (Long)

## Safety Beam Border Patrol



- Transmitter and receiver create an infrared beam up to 20 metres
- Alarms if someone moves through the beam
- Three volume levels
- Two distance settings
- Low battery warning
- Each unit uses 1.9v battery (not included)

SKU: 4717432002286

## Handigrip Pro Reachers

Handigrip Pro Long

Handigrip Pro Standard



- A multi-purpose reacher which has a unique rotating head which gives maximum visibility when retrieving an object
- The robust construction offers extra durability for heavier items
- Prevents the need for bending and overreaching

SKU: 5050962171664 (Standard) SKU: 5050962171671 (Long)

## Voice Alert Alarm



- Versatile fall management alert system with magnetic switch and optional sensor pad control
- Choice of voice or 4 different alarm tones
- Can be used in conjunction with Large Sensor Mat

SKU: 4891463103225

## Home Safety Alert



- Ideal solution for live-in carers or those who have parents or disabled family members living at home
- A wireless paging system has 2 pendants covering a 60 metre range across the home
- Features a call and panic button on each pendant
- Choice of 3 volume levels on the main unit which feature a low battery indicator for when the batteries are low
- Easy to install and set up in the home



SKU: 4891463102402

## Sensor Mat



- Can be set to alarm by pressure either on or off the mat depending on the position of a switch in the voice alert monitor
- Suitable for use on a bed, floor or the stairs
- Can be used in conjunction with the Voice Alert Alarm

SKU: 4891463101092



## Motion Activated Light



- LED motion sensor switches on when motion is detected outside
- Dusk to dawn sensor switches lights off during daylight
- Easily installed and battery operated

SKU: 5060195207207

## Key Safe



- This external key safe will never allow you to be locked out of your house again
- Discreet and handy independent living aid features an entry code that can be easily set
- Secure, affordable and weather resistant that's suitable for use outside to store a key safely
- Supplied with required fixings to fit securely to the outside of your building
- Comes with a durable and fully waterproof rubber cover

SKU: 5021196679134

## 3 Key Turner



- Designed to fit 3 keys to give a larger grip and stronger leverage to turn in the lock
- This accessory makes operating locks much easier for people with weak joints

SKU: 4713280200164

## Big Button Telephone



- Easy to use telephone with extra-large keypad and flashing indicator when receiving a call
- 3 speed dial memory for emergency numbers
- Features adjustable receiver volume and is compatible with most hearing aids

SKU: 5038948289589

## Picture Dial Telephone



- Great asset for every home
- Easy to set up with 6 direct programmable photo buttons
- An adjustable, loud ring of 90dB
- Features two, large contoured easy to grip handles

SKU: 4250711906634



## Coaster Pack



- Will adhere themselves to the surface, but can be easily removed and will not leave any residue behind
- Anti-slip and made from a rubber silicone
- Sold as a pack of 4
- Colours may vary

SKU: 5060192212020

## Anti-Slip Material Roll



- Can be easily moulded or wrapped around objects and handles
- Can be used flat in a tray, drawer or on the floor to grip
- Thin and flexible

SKU: 5060192212280

## Safety Strip



- Can be easily moulded or wrapped around objects and handles
- Thin and flexible

SKU: 5060192212273

## Anti-Slip Table Mat



- A slip-resistant silicone rubber mat
- Suitable for use in areas which require high levels of hygiene
- Dishwasher safe and non-toxic
- Colours may vary

SKU: 5060192212112

## Anti-Slip Mat



- A super grip adhesive mat
- Grips at steep angles
- Can be easily removed and will not leave any residue behind

SKU: 5060192212297

## Folding Wooden Tray



- Suitable for use in the bedroom or whilst on the sofa in the lounge
- Wooden legs on the tray fold out to be placed over your legs, or can be kept down to be used as a lap tray
- Table top surface is laminated, allowing for easy cleaning
- Features built-in handles to make it easier to carry and to position

SKU: 5021196702177

## Lap Tray & Cushion



- Ideal for use around the home
- Comfortable and stable with a built-in bean bag cushion
- Suitable for dining, reading, writing, hobbies and crafts

SKU: 5021196702214

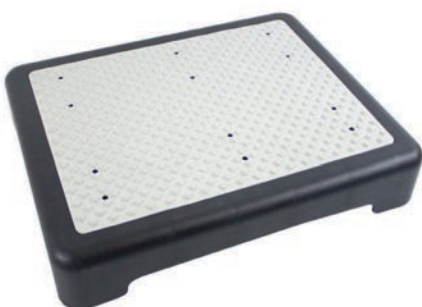
## Wooden Lap Tray



- Ideal for use around the home
- Comfortable and stable with a built-in bean bag cushion
- Suitable for dining, reading, writing, hobbies and crafts
- Available in a puppy or kitten design

SKU: 5021196789918 (Puppy)  
SKU: 5021196789901 (Kitten)

## Outdoor Half Step



- Helps with getting over larger door steps
- Slip-resistant surface that includes drainage holes
- Maximum User Weight: 21 stone

SKU: 5021196755227

## Foot Stool



- A comfortable foot and leg rest
- Height and angle adjustable
- Upholstered in a beige drayton style fabric

SKU: 5055062622122

## Foot Stool & Safety Hand Rail



- Features rubber ferrules and a rubber anti-slip mat on the step
- The chrome plated handrail provides additional support and safety

SKU: 5055062623280



# Step Inside a Homelift

All the products and services that Ableworld offer are about assisting you to live in your own home, independently.

With this in mind we are excited to be able to offer you another product to make your life easier. A Stiltz Homelift allows you to travel safely and effortlessly between floors. Taking up minimal space, each of the models plugs into a standard mains socket and uses no more electricity than switching your toaster on!

Due to its size and weight loading, the homelift can comfortably accommodate a full sized wheelchair. The gently-angled integral ramp and the wider entrance/exit space helps make access very simple.

Installation is simple and in most cases work is completed within a single day.

For more information visit  
[www.ableworld.co.uk](http://www.ableworld.co.uk)

or pop into your local store for more details.





# A range of Stairlifts to suit your home



## WHY ABLEWORLD?

### No pressure selling

All our staff have strict codes of conduct written into their contracts.

### DBS checked

All staff visiting your home have been criminal record checked and have an identity card to give us both peace of mind.

### A range of quality products

Not just one manufacturer, meaning the right stairlift for you.

### A local established company with local Engineers

Not a 'one man band' with no other support. What happens if they are on holiday or playing golf! Ableworld have a large trained team of specialised Engineers.

### We cover everything ourselves

Sale, fitting and servicing. Some companies pass on the sale for commission and you often get no further support from them.



Your Local Specialist

### A local Company with Local Engineers and Stores

More often than not, it will be the same Engineer who quotes and fits your stairlift - no pressure selling

### Try before you buy at your local store

### Ableworld Rental Stairlifts

Ableworld always have availability of Straight Rental Stairlifts.

### Ableworld Service Contracts

We offer a wide range of service contracts to give you that extra peace of mind all at value for money prices.

**STRAIGHT STAIRLIFTS  
OFTEN FITTED NEXT**

**Ableworld offer a 24 hour, 7 days a week,  
52 weeks of the year helpline  
where you can always talk to a person.  
Plus out of hours engineering support.**

# A RANGE OF CURVED STAIRLIFTS TO SUIT YOUR HOME

Approved Service

**Which?**  
Trusted traders

Installation,  
Servicing  
& Repair

Proud to be endorsed as a Handicare Prestige Partner and

## Handicare Simplicity 2000



A neat and versatile basic solution to curved narrow staircases with compact seat and more knee clearance. Available in sand

## Handicare 2000



A neat and versatile solution to curved narrow staircases. Power and full colour options available

## Handicare Freecurve



Can be fitted to internal or external bend of a staircase. Provides a comfortable and smooth ride. Aesthetically pleasing single rail

## Platinum Ultimate



Simple, tidy and reliable solution. Features adjustable arms, backrest and footrest with interchangeable arm controls. Two way power swivel is available



## Powered Swivel



Simply press the armrest control. When the lift reaches the top, the seat will automatically turn 90 degrees on 2000, 70 degrees on Freecurve

## Powered Footplate



Removes the need for you to bend down to fold or unfold the footplate. You can choose to have a footplate that folds automatically when the seat is folded and unfolded, or that is operated independently

## Platinum Curve



Offers unparalleled support, comfort and adjustability. Choice of upholstery colours to suit any home



Our Engineers work from quote to installation. We promise no enquiry onto

## What our customers say

"My chair lift broke down. Phoned Ableworld over the phone, so they sent a engineer service!!"

- J. Bloore

"Cannot recommend them highly enough. After my enquiry, to the home survey a couple of days later the stairlift the next day everything was sorted. Jack for all his help and understanding. A great job of fitting the stairlift!" - J. Ellis

"Absolutely OUTSTANDING service. I telephoned on a Thursday to enquire and they came to my house that same day to carry out the survey. The stairlift was fitted less than 48 hours later! Thank you for your sheer professionalism!" - D. Backhouse

"We recently had a stairlift fitted for my mother. The fitter who fitted it was patient and helpful. The service was very pleasant. They weren't pushy in any way. I would rate this company 10/10. Will use them again and recommend it. Thanks again!" - G. Dyer

Lifetime Motor Warranty  
and three years parts warranty  
on all Handicare stairlifts

Ableworld offer a 24 hour  
52 weeks of the year service  
you can talk to  
Plus out of hours emergency

# A RANGE OF STRAIGHT STAIRLIFTS TO SUIT YOUR HOME

handicare



Which Trusted Trader giving our customers peace of mind

will look after you from installation and beyond. We never to sell your lift to third parties.

## Customers say

Ableworld at 1 o'clock couldn't fix the engineer out with in an hour. Great

enough. From my initial telephone call a few hours later, and to fitting of a lift seamless. A massive thank you to Ableworld and to Steve for doing such a great job. Thanks to Ableworld and Steve.

received from Ableworld! I was looking for a lift about a stairlift, Ableworld came out for an assessment and the stairlift was fitted. Truly excellent customer service and value for money.

my grandmother. The gentleman who came and the lady on the phone was very helpful anyway and were a great help. I will use your company again and would highly recommend you. Thanks to Ableworld and Steve.

hour, 7 days a week, our 24-hour helpline where you can speak to a person. We offer full technical engineering support.

Platinum Horizon



Slimline seat and all the essential features to ensure a safe and comfortable ride. Manual operated swivel allows to safely turn the seat to face the landing at the top. Choice of upholstery colours to suit any home



Handicare 1000



A compact, comfortable and easy to use stairlift. Available with powered accessories.

Handicare 1100



Ground-breaking stairlift. Slimmest straight track on the market! Costs under 20p a week to run on electricity

Brooks Lincoln



A smooth, quiet and reliable stairlift. Anodised track, dual controls, and powered options

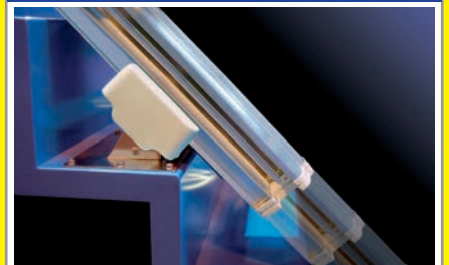


Brooks Outdoor Lift



Gives you the freedom to access an outdoor area. Lift is fully waterproofed to ensure full operation all year round.

Slide Track



Ideal for when an obstruction is at both the top and bottom of the stairs. The track moves up with the carriage, leaving the bottom clear as well as the top

## STRAIGHT STAIRLIFTS OFTEN FITTED NEXT DAY

# Stairlift Rentals

Often people don't wish to buy a Stairlift outright, or they do not require it for a very long period of time. Therefore renting a Stairlift is often a more practical and cost effective option.

- We offer rentals on most straight stairlifts, and unlike some of our competitors we do not insist on a fixed term contract, you only hire the lift for as long as you need it.
- All our rental lifts have the same prompt call out and maintenance service as a new lift, and it is all included in your monthly rental price.
- If you would like a free, no obligation quote for a Stairlift, or you have any other queries, please call your local store, details on the back page.

## Reconditioned stairlifts from £495

We guarantee to buy back any stairlift that was purchased from us and we will often buy ones that we did not sell. We clean and service these lifts and then we re-sell them as reconditioned. Naturally the older the stairlift and the shorter the track length the cheaper it is to us and therefore to you.

So we often have stairlifts that we sell from £495 and the maximum price for a straight forward re-conditioned stairlift (no hinges no power seating) is around £995. Naturally all of these are subject to availability so sometimes there could be a delay, however our engineers have a list of availability and it may be fitted the next day!

**We buy back stairlifts - Up to £500 paid Acorn, Brooks, Companion, Handicare and Age UK (Subject to survey and age)**

We also provide a range of service agreements to give you added peace of mind on stairlifts

### Bronze Cover +

- 1 year cover + warranty year
- 1 annual scheduled service visits
- 24 hour priority call out + 24 hour helpline
- All standard call outs, parts and labour charges are included in case of breakdown



### Silver Cover +

- 2 year cover + warranty year
- 2 annual scheduled service visits
- 24 hour priority call out + 24 hour helpline
- All standard call outs, parts and labour charges are included in case of breakdown



### Gold Cover +

- 5 year cover + warranty year
- 5 annual scheduled service visits
- 24 hour priority call out + 24 hour helpline
- All standard call outs, parts and labour charges are included in case of breakdown including out of hours (refundable)



**STRAIGHT STAIRLIFTS  
OFTEN FITTED NEXT DAY**

**Ableworld offer a 24 hour, 7 days a week,  
52 weeks of the year helpline  
where you can talk to a person.  
Plus out of hours engineering support.**



# Kitchen & Dining

Your time in the kitchen should be enjoyed rather than suffering with unnecessary strain or discomfort while you cook with kitchen aids. Cooking is an enjoyable pastime and our aids are designed with comfort and usability in mind to allow you to easily hold and control kitchen utensils.

Our kitchen aids range from food preparation right down to cutlery and plates. We sell a whole host of products that can help you easily prepare a limitless amount of meals including comfort grip knives and jar openers to avoid any spillages.

# Perching Stools & Clothing Protectors



## Bariatric Perching Stool



- Height adjustable with arms and padded backrest and seat • Features a wide seat frame, reduced incline for comfort and safety, large footprint for greater stability and V-shaped front brace
- Maximum User Weight: 39 stone

SKU: 5055062608461

## Perching Stool



- It's sloping seat allows the user to rise easily • Height adjustable from 51-64cm • Legs are angled for added stability, and the feet of the chair have rubber ferrules to prevent slipping
- Maximum User Weight: 30 stone

SKU: 5016181001380



Online Delivery UK wide

Visit [www.ableworld.co.uk](http://www.ableworld.co.uk) for 24 hour online ordering delivered to your door.

## Napkin Clothing Protector



- Easily adjustable popper fastenings
- The backing is waterproof and the front is an absorbent cotton/polyester
- Can be wiped clean or hand washed

SKU: 5055062609765 (Green)  
SKU: 5055062609772 (Maroon)

## PVC Clothing Protector



- Highly absorbent with fluid-proof PVC backing • Easily adjustable neckline ensuring a snug fit with a secure snap closure • Can be wiped clean or hand washed

SKU: 5055062622061

## Disposable Protector



- Super absorbent water-resistant stick-on protector • Features a pouch so food can be caught • Easily to apply and dispose • Ideal for protecting your clothes from food or drink spills • Comes in pack of 100

SKU: 570538764585

## Washable Protector



- Designed to prevent food and drinking from soaking through and staining clothes during mealtimes
- Extra long in length to ensure maximum protection
- An adjustable snap closure for comfort
- Ideal for those who find dropping food and spilling drinks a problem
- Reusable and can be machine washed

SKU: 5055062622054 (Green)  
SKU: 5055062629893 (Maroon)

## Crumb Catcher Apron



- Protects your clothes from spilled foods and liquids with a waterproof front
- Lightweight and features a velcro fastening
- Suitable for adults and children

SKU: 4713280205329

## Caring Mug



- Wide stable base and two large handles • Lid has well designed spout, useful for those with a tremor or those who cannot sit upright • Can be used in a microwave but not dishwasher recommended • Capacity: 300ml

**SKU: 5038948393170**

## Non-Spill Tumbler



- Specially designed base to prevent being overturned and spillages
- Ideal for those with poor motor skills or for people with Parkinsons
- Dishwasher safe

**SKU: 4713280201239 (Red)**  
**SKU: 4713280201246 (White)**  
**SKU: 4713280201222 (Green)**  
**SKU: 4713280201253 (Luminous)**

## 2 Handled Mug



- Two large easy to grip contoured handles • Includes two push on lids - one drinking spout and the other an anti-spill lid • Ideal for users who suffer from tremors and a weak grip
- Capacity: 270ml

**SKU: 5055785707731**

## 2 Handled Ceramic Mug



- Ideal for those who have a weakened grip or suffer from Parkinson's
- Two handles give enhanced grip and aids independent drinking • Discreet and hard wearing
- Dishwasher and microwave safe

**SKU: 5021196758778**

## Duo Cup Holder



- Innovative ergonomic handle that attaches to everyday mugs, glasses and bottles • Protects hands and fingers from hot mug surfaces • Great alternative to 2 handled mugs, allowing everyone to use the same mug

**SKU: 5055062612925**

## Cup Holder



- Two large handles to assist with control
- Ideal for people with limited grip, simply slip hands through the handles
- It fits almost any hand
- Dishwasher safe under 70 degrees

**SKU: 4713280200591**

## Kennedy Cup



- Spill proof that eliminates messy spills and increases confidence • An easy grip handle, sturdy screw on lid
- Can be used with disposable straws
- Dishwasher safe • Capacity: 199ml

**SKU: 779709035162**

## Nose Cut Out Cup



- Allows for drinking without excessive neck movement • Front cut-out section to accommodate the nose, ideal for drinking in a seated or lying position
- Made from unbreakable plastic
- Suitable for microwave use and is dishwasher safe • Capacity: 237ml

**SKU: 5021196609414**

## Drinking Cup



- Its long mouth piece makes it easier to hold whilst drinking • Ideal for people who have limited control or people who struggle to grip a regular cup • Colours may vary
- Capacity: 250ml

**SKU: 4713280200539**



## Strawberi



- Small, smart straw holder that holds a straw securely against the side of a glass or cup
- Pack of 5 straw holders which aid with use of hands free drinking
- Reusable and dishwasher safe

SKU: 5055062612932

## One Way Drinking Straw



- Makes drinking easier for people who have difficulty swallowing
- One way valve which stays filled with fluid after removing the user's lips, therefore reducing the air that is ingested
- Makes it less likely for coughing and choking

SKU: 4713280200621

## Egg Cups with Suction



- Stick to almost any surface
- Ideal for people with tremors or only the use of one hand
- Sold in packs of 2
- Colours may vary

SKU: 4713280200607

## Plate Guard



- Fits tightly around the rim of any circular plate between 200-300mm in diameter
- Easy to fit and remove
- Stops food from being pushed off the plate
- Colours may vary

SKU: 4713280200447

## Divided Plate



- Segregated compartment on the one plate to allow food to be placed separately
- Anti-slip base holds the plate in place on a smooth flat surface
- Ideal for those with limited hand control
- Colours may vary

SKU: 4713280201055

## Scoop Bowl



- Had a large moulded side to aid scooping food
- Anti-slip suction cup on the base prevents the dish from moving
- Ideal for those with limited motor skills or only the use of one hand
- Microwave and dishwasher safe
- Colours may vary

SKU: 4713280200409

## Scoop Dish



- Designed to help you eat independently
- Anti-slip suction cup on the base prevents the dish from moving
- Ideal for those with limited motor skills or only the use of one hand
- Microwave and dishwasher safe
- Colours may vary

SKU: 4713280200423

## Uccello Tipping Kettle



- Ergonomic handle for stable grip and effortless pour action
- Has an effortless 'filt and pour' action which directs hot water to the fixed position of the cup

SKU: 9369999311612

## Kettle Tipper



- Helps with the pouring of a kettle
- Pivots on raised wire frame by gentle pressure on the handle to pour into the cup
- Suitable for use with the majority of kettles
- Ideal for users with limited dexterity or weakened grip

SKU: 5021196764465



## Anti-Slip Bottle Opener



- Silicone rubber bottle opener ideal for those with poor grip
- Non-toxic and safe for using in the kitchen near food
- Colours may vary

SKU: 5060192212358

## Anti-Slip Jar Opener



- A silicone rubber jar opener that makes opening jars easier
- Its domed shape means its suitable for most jar sizes
- Ideal for those with Arthritis or a weakened grip
- Colours may vary

SKU: 5060192211993

## Screw Top Opener



- Practical and patented opener for various bottles with safety caps
- Perfect for opening soft drink bottles with plastic screw lids
- Ideal for those with limited hand dexterity

SKU: 5010725143475

## Spill Not Jar Opener



- Features three inverted rubber cones that are used to hold a container steady on a smooth surface
- Can be fixed permanently onto a worktop or contained in a drawer
- Designed to assist those with limited grip

SKU: 4713280200683

## Kitchen Grip Set



- Set contains a 19cm red coaster, a blue jar opener and a smaller yellow bottle opener
- Provide a firm grip and hold that is particularly useful for people with Arthritis or any conditions that weakens hand grip

SKU: 5060192213355

## Jar & Bottle Opener



- Extremely handy tool for those with weakened grip
- Is a three in one opener which allows you to turn and open any bottle or jar
- Dishwasher safe

SKU: 4713280200669

## Jar Pop Key



- The simple action leaves the jar lid loose for easy unscrewing
- Fits all traditional preserving jars
- Dishwasher proof for easy cleaning

SKU: 5010725101895

## Plastic Multi Opener



- Provides easy opening of objects such as cans and plastic or glass bottles
- Ergonomic handle makes it comfortable to hold
- Perfect for those with limited hand dexterity
- Length: 14.5cm

SKU: 4713280200690



## Knives



Slicing Knife



Chef Knife



Rocker Knife

- Can be used to slice a variety of foods including bread, meat and vegetables
- Easy to grip ergonomic handle that is ideal for people with weakened grip or with limited hand or arm movement • Dishwasher safe

**SKU: 4713280200348 (Slicing Knife)**  
**SKU: 4713280200331 (Chef Knife)**  
**SKU: 5021196609322 (Rocker Knife)**

## Kura Cutlery



Angled Spoon

- A stainless-steel utensil with a contoured plastic handle
- Ideal for those with a weak grip and restricted wrist or finger movement
- Easy to clean and dishwasher safe
- Additionally, the Angled Spoon is angled to the right and designed to minimise wrist movement

**SKU: 5038948800388 (Angled Spoon)**  
**SKU: 5038948800265 (Spoon)**  
**SKU: 5038948800142 (Fork)**  
**SKU: 5038948800029 (Knife)**

## Arthritis Friendly Cutlery Set



- Utensil with a soft cushion grip and extra wide handles • Each utensil is supplied with a utensil strap that helps secure it to the hand of the user • Ideal for those with restricted wrist or finger movement • Set includes a knife, fork and spoon

**SKU: 4713280200355**

## Bendable Cutlery



- Large soft cushion grip for users with limited hand or arm movement, or a weakened grip • Can be bent to any angle to suit the user • Features a loop to secure utensil strap • Dishwasher safe

**SKU: 5021196609308 (Spoon)**  
**SKU: 5021196609315 (Fork)**

## Curved Cutlery



- This easy grip curved cutlery makes eating easier with improved control for users with a weaker grip • Easy to clean • Dishwasher safe • Colours may vary

**SKU: 4713280201420 (RH Spoon)**  
**SKU: 4713280201499 (LH Spoon)**  
**SKU: 4713280201451 (RH Fork)**  
**SKU: 4713280201529 (LH Fork)**



# Mobility

Three and four wheeled walking aids along with walking frames and walkers are some of the most widely used walking aids for permanent as well as temporary use.

Designed to help you walk they are particularly suited to the elderly and those with a disability. Walkers help you move independently both inside and outside of the home and are found to be convenient and hassle free for many.

## Budget 3 Wheel Walker



- A sturdy steel frame with an easy fold system perfect for storage or transportation.
- With Arthritic friendly handles that are height adjustable allowing the user to alter the handles height to ensure the most comfortable and supportive position for user is achieved.
- Supplied with a large removable bag and front fitting basket with top tray that is ideal for shopping.

SKU: 5055062609635

## 3 Wheel Walker



- A strong lightweight aluminium frame with an easy fold system perfect for storage or transportation.
- With Arthritic friendly handles that are height adjustable allowing the user to alter the handle height to ensure the most comfortable and supportive position for the user is achieved.
- Supplied with large removable bag and front fitting basket with top tray that is ideal for shopping.

SKU: 5060268444751

## Tri-Walker with Seat



- A unique walker that enables users to rest when needed on the secure seat.
- It's easily manoeuvrable and can be used either indoors or out. A lightweight frame weighing only 7kg with an easy fold system making it perfect for storing or transportation.
- The handle height can be easily adjusted and loop lock cable brakes can be easily applied for support.
- Supplied with a handy side pocket ideal for carrying essentials.

SKU: 5055785712643

## Triumph Walker



- This walker has a 'one touch' locking lever brake system that are squeezed to slow down or stop, then pushed down firmly to lock the wheels prior to seating.
- Height adjustable handles which are easy to alter whilst ensuring the perfect posture is achieved when walking. For excellent storing the Triumph folds flat, clips together and can stand unsupported.
- Supplied with a padded seat, walking stick holder and a shopping caddy perfect for storing your shopping.

SKU: 5055062606023

## Sit & Stroll Walker



- Has a unique handle system to aid comfort whilst pushing taking strain away from the shoulders.
- It's lightweight frame with flexible wheels to ensure ease of use. The Sit & Stroll also features an easy fold system for easy storage.
- Supplied with two shopping bags perfect for small shopping trips and a padded seat should you get tired whilst out and about.

SKU: 5037409194585



Watch our  
'Guide to Walkers'  
on our Youtube  
channel.

For other Guides or product  
videos subscribe to  
[youtube.com/Ableworld](https://www.youtube.com/Ableworld)

## Budget 4 Wheel Walker



- A sturdy steel frame with an easy fold system perfect for storing and transportation.
- With Arthritic friendly handles that are height adjustable allowing the user to alter the handle height to ensure the most comfortable and supportive position for user is achieved.
- Supplied with a padded seat, removable tray, a shopping basket and a walking stick/crutch holder.

SKU: 5055062609949

## 4 Wheel Walker



- A strong lightweight aluminium frame with an easy fold system perfect for storage and transportation.
- With Arthritic friendly handles that are height adjustable allowing the user to alter the handle height to ensure the most comfortable and supportive position for the user is achieved.
- Supplied with a handy padded seat and under seat removable storage bag.

SKU: 5055062606115

## Height Adjustable Walker



- Manufactured with exceptionally strong and durable aluminium making it extremely light.
- Whilst not in the use the walker can be folded down for easy storage and transportation.
- With Arthritic friendly handles that are height adjustable allowing the user to alter the handle height to ensure the most comfortable position.
- Supplied with a handy padded seat and under seat removable storage bag.

SKU: 5055062624843

## X Fold Walker



- It's cross brace design which folds in two directions for a compact size, ideal for storage or transportation • The ergonomic loop brakes include internally routed brake cables for added safety • The integral seat handle serves as a useful handgrip for pulling the walker when used as a shopper • The soft, flexible backrest provides comfort whilst seated • Supplied with a removable storage bag for storing shopping • X-Fold also feature reflectors to enhance visibility when dark.

SKU: 5055062625949

## Glider Plus Adjustable Walker



- Exceptionally lightweight weighing just 6.5kg.
- It's unique, comfortable folding backrest as well as adjustable height handles.
- It folds flat, clips together and can stand unsupported, making it ideal for transport or for storage when not in use.
- Supplied with a padded seat and under seat shopping caddy with a comfortable backrest.



SKU: 5055062626960

## Grand Walker



- A heavy duty lightweight adjustable bariatric walker.
- It's unique, comfortable folding backrest as well as adjustable height handles.
- It folds flat, clips together and can stand unsupported, making it ideal for transport or for storage when not in use.
- Supplied with a padded seat and under seat shopping caddy with a comfortable backrest.



SKU: 5055062609697

# Walking Frames



## Walking Frames



This Walking Frame has a classic design making it a dependable walking aid.

It's lightweight and highly stable, made from high tensile aluminium with profiled hand grips ensuring its comfortable to use.

This invaluable mobility aid for those who have difficulty walking unaided.

The Walking Frame can greatly enhance an individual feeling of independence. It can be used outdoors and indoors to provide a stable frame to lean on.

**SKU: 5021196674139 (Regular Small)**

**SKU: 5021196610168 (Regular Medium)**

**SKU: 5021196610175 (Regular Large)**

## Wheeled Frames



This Wheeled Walking Frame is lightweight to aid with better control and manoeuvrability.

Fully height adjustable through a wide range allowing the user to choose the best height to suit their requirements.

It's lightweight and highly stable, made from high tensile aluminium with profiled hand grips ensuring its comfortable to use.

With two large wheels to the front of the walking frame for improved user safety. It can be used outdoors and indoors.

**SKU: 5021196674689 (Regular Small)**

**SKU: 5021196610229 (Regular Medium)**

**SKU: 5021196610236 (Regular Large)**

## Deluxe Walking Frame



- A lightweight yet sturdy aluminium walking frame that allows the user to walk with it without the need to lift, making it ideal for those with limited strength or mobility.
- Suitable for indoor use as well as outdoor.
- Also features anti-slip, anti-marking ferrules.
- Height adjustable from 32"-39".
- Folds flat at the touch of a button for easy storage and transportation.

**SKU: 5056125979580**

## Support Walking Frame



- Has been designed with two pairs of handgrips on two levels to aid the user to rise from the seated position.
- Suitable for both indoor and outdoor use, with a durable frame that's manufactured from sturdy yet lightweight aluminium tubing for easy manoeuvrability and handling.
- The one touch folding mechanism makes the walking frame easy to store and transport when needed.
- Height adjustable from 28"-38".

SKU: 5055062624881

## Walking Frame Net Bag



- Useful net bag that fits securely to the walking frame
- Fits most models of walking frames
- Ideal for use around town

SKU: 5050996024233

## Strolley Trolleys



SKU: 5055062623846

- Ideal mobility trolley to use to transfer drinks, meals and personal items between rooms and around the home
- Fully height adjustable to suit the needs of the user, and features two unique patented trays clip on and off for easy cleaning
- The castors are manufactured from polypropylene and are amazingly resistant to damage, they also incorporate a patented wheel guard to reduce hair and fibre entrapment

SKU: 5021196758662 (With Brakes)

## Walking Frame Caddy



- Supplied with a tray that is designed to safely transport a plate of food and mug holder, which catches any spillages
- Simply clips onto your walking frame and the tray can easily be removed
- Dishwasher safe

SKU: 5038948298772

## Leisure Trolley



- Designed to hold all you need for a day out with the convenience of an integrated pull down seat
- Easy to push or pull by using the ergonomic handle, as well as being foldable allowing for easy storage
- Features a large main compartment which can hold up to 4.7 stone and large zipped pockets on the front and in the top flap cover to keep important belongings safe
- Comes in an attractive, multi-coloured striped finish
- Made from micro-fibre making it easy to clean, water-resistant and durable
- The seat can hold weights of up to 16 stone

SKU: 4891463104352



# Walking Sticks



## Cane Seat



- Ideal for those who need that extra support and balance
- Extra grip, rubber ferrule on all four legs provide stability
- Height adjustable from 28-39
- Maximum User Weight: 20 stone

SKU: 5060266841736

## Quad Cane



- Ideal for those who need that extra support and balance
- Extra grip, rubber ferrule on all four legs provide stability
- Height adjustable from 28-39"
- Maximum User Weight: 20 stone

SKU: 5060266841781

## Aluminium Walking Stick



- Height adjustable walking stick
- Contoured plastic handle Ideal for those that require support and balance when walking independently

SKU: 5060266844874

## Derby Cane



- Offers a sturdy support
- Provides a comfortable grip and is hard-wearing
- The palm can wrap around the handle with ease

SKU: 5035566000404



Fantastic range of folding, fischer, crooks and derby canes, various colours and Patterns available

Go to: [www.ableworld.co.uk](http://www.ableworld.co.uk) for more information.

## Glow & Go Walking Stick



- A sturdy height adjustable walking stick
- Soft silicone gel glow handle and tip which allow these section to glow in the dark

SKU: 822383252018

## Ziggy Walking Sticks



Gel Handle

SKU: 5035566031927  
(Gel, Black)



Crook Handle

SKU: 5035566034003  
(Crook, Blue)



Derby Handle

SKU: 5035566033397  
(Derby, Purple)



Tribase

SKU: 5035566033945  
(Tribase)

- A super lightweight walking stick
- Height adjustable allowing comfort whilst walking
- Folds easily into three sections
- Supplied with a handy wrist strap
- Available in a crook, gel or derby handle or with a tribase ferrule.

RANGE OF COLOURS



# Walking Sticks & Ferrules

## Hurricane



AS SEEN  
ON TV

SKU: 5055785712667 (Red)  
SKU: 5055785712674 (Blue)  
SKU: 5055785713169 (Purple)  
SKU: 5055785712681 (Black)

- A height adjustable walking stick with a wide base for added stability
- Features a 3-point contact base designed to be used on any terrain
- Base incorporates a 360 degree pivot head allowing full flexibility
- Folds easily into three sections
- Supplied with a handy wrist strap and travel bag

## Standard Crutches



- Can be adjusted to suit almost anyone's frame
- Moulded hand grips are anatomically contoured to match the natural shape of the hand
- Sold as a pair

SKU: 5021196610410

## Coloured Crutches



- Stylish forearm crutches that are lightweight yet sturdy
- Height adjustable up to 39"
- Visibility reflectors
- Sold in pairs

SKU: 5021196717829 (Black)  
SKU: 5021196717836 (Blue)  
SKU: 5021196717843 (Pink)  
SKU: 5021196717812 (Silver)

## Ferrules



- A pair of black or grey rubber ferrules
- Designed to replace the worn out feet on the end of walking frames, walkers, walking sticks and canes
- Provides extra safety
- Available in a choice of sizes

SKU: 5035566009445 (Black C, 13mm)  
SKU: 5035566009452 (Black C, 16mm)  
SKU: 5035566009469 (Black C, 19mm)  
SKU: 5035566009476 (Black C, 22mm)  
SKU: 5035566009483 (Black C, 25mm)  
SKU: 5035566028477 (Grey Z, 16mm)  
SKU: 5035566028484 (Grey Z, 19mm)  
SKU: 5035566028491 (Grey Z, 22mm)  
SKU: 5035566028507 (Grey Z, 25mm)

## Ice Ferrule



- Designed to be used in icy conditions
- Can be fitted over a rubber ferrule
- Folds up out of the way when not required

SKU: 5035566020839

## Flashing Cane Ferrule



- Enables users to be more visible at night with a bright LED light
- Sensor reactive and flashes each time the ferrule makes contact with a walking surface
- LED light can be switched off to conserve battery life (battery included)

SKU: 5055785713954

## Tribase Ferrules



- To be used once your original ferrules are used and worn
- Each set contain a pack of 3

SKU: 5035566034478 (Ziggy)  
SKU: 5055062629602 (Hurrycane)

# Walking Stick Accessories & Transfer Aids



## Walking Stick Strap



- A handy strap which helps to stop you dropping your walking stick • The elastic strap fastens around your stick and the cord is kept on your wrist

SKU: 5060266846564

## Walking Stick Carry Bag



- Designed to hold a folding walking stick • Has a strap brace to store and carry a folding walking stick • Compatible with most folding walking sticks

SKU: 5055062607839

## Walking Stick Clip



- Fits easily around any walking stick
- Allows any walking stick to be balanced on the edge of a table or work surface rather than propped against a wall or corner
- Allows the user to have both hands free and carry out tasks with confidence and ease

SKU: 5055062607884

## Bridgit



- Joins crutches against together in a stable 'X' shape to rest against any surface
- Can be used to hook single crutches or walking sticks over the back of a chair/ hand rail
- Suitable for crutches and sticks between 18-25mm

SKU: 5055062612949

## Transfer Turntable



- Strong and lightweight turntable which provides an easy rotation
- Enables the transfer of a person safely

SKU: 5021196758396

## Glide Sheet



- Can be used to slide patients between two places without being lifted
- Helps to reduce strain for both patient and carer
- Size: 190 x 100cm

SKU: 5021196796442

## Transfer Belt



- Designed for the helper to lift persons from a bed, wheelchair or short distance transfer
- The belt is adjusted and buckled around the persons waist enabling the carer to reach the webbed handles

SKU: 4713280200850

## Duo Transfer Slide



- Unique design allows for an angled transfer as well as a straight transfer from one seated position to another
- Handles which gives the user means of pulling themselves across the smooth surface

SKU: 5055062619535

## Leg Lifter



- An extendable product to assist in lifting the legs on or off the bed or a wheelchair
- Length: 41"

SKU: 5021196609698

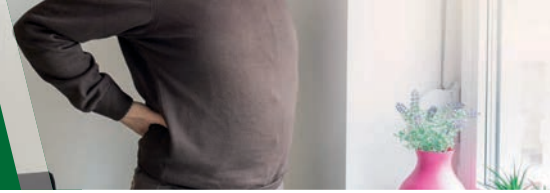


# Supports

There may come a time when you need a little extra support to ensure you lead a comfortable life. It may be that little aches and pains prevent you doing something you enjoy. To help you achieve your goals we have a large range of supports here at Ableworld. Most of the supports are available in a range of sizes as we understand that not everyone is the same.

We have supports for all eventualities from neck and shoulder supports down to ankle and heel supports to ensure you are comfortable from head to toe!

# Hand & Arm Supports



## Arthritic Gloves



- Provide warmth and compression, the adjustable velcro strap allows for added comfort and fit
- The outer layer is textured for additional grip
- Ideal for repetitive strain injury

SKU: 609580831990 (Small)  
SKU: 609580841999 (Medium)  
SKU: 609580851998 (Large)  
SKU: 609580861997 (XL)

## Elastic Wrist Support



- Provides comfortable and effective support without restricting movement
- Suitable for sport and everyday use
- Made from a cotton lined, neoprene fabric which helps to retain heat

SKU: 6003058068132 (S/M)  
SKU: 6003058068149 (M/L)

## Advanced Wrist Support



- Provides full, robust protection against muscle and joint injuries
- Made from high quality, cotton lined neoprene fabric, which helps to retain heat
- Available in a universal size

SKU: 6003058068484

## Elastic Elbow Support

- Provides heat, support and compression to the elbow joint without restricting flexibility
- Helps to avoid the misery and frustration from an injured or weak elbow
- Comfortably contours to the shape of the elbow retaining heat to relieve pain
- Sizes have been measured around the elbow joint with the arm extended

SKU: 609580836179 (Small) 23-26cm  
SKU: 609580846178 (Medium) 27-30cm  
SKU: 609580856177 (Large) 31-35cm  
SKU: 609580866176 (XL) 36-40cm



## Foam Arm Sling



- Designed to be used after an injury to the wrist or arm
- Promotes healing and comfort
- Made from soft fabric and offers effective support with the foam strap
- Available in a universal size

SKU: 6003058068446

## Arm Sling



- Provides support for wrist and arm pain and injuries
- Can use it on either left or right arm
- Keeps the opposing shoulder free

SKU: 609580806318

## Shoulder Support



- Provides therapeutic warmth to the shoulder and upper arm
- Provides compression and support to the shoulder and assists with healing
- Minimises the chance of any further injuries
- Sizes have been measured around the chest

SKU: 4719863691015 (Medium) 94-103.5cm  
SKU: 4719863691022 (Large) 104.1-113.7cm

## Adjustable Tennis Elbow Support



- Prevention and the treatment of tennis elbow
- Useful for repetitive strain injury
- Available in a universal size

SKU: 609580801962

## Elastic Back Stabiliser

- Provides compression and support for general lower back dysfunctions
- Built in flexible stabilisers which provide additional support to the lower back
- Features an adjustable elastic side straps for extra compression
- Sizes have been measured around the waist

SKU: 609580836278 (Small) 65-75cm  
 SKU: 609580846277 (Medium) 76-85cm  
 SKU: 609580856276 (Large) 86-95cm  
 SKU: 609580866275 (XL) 96-105cm  
 SKU: 609580876274 (XXL) 106-115cm



## Back Support



- Provides maximum support to the mid and lower back without restricting movement
- Adjustable wrap around design allows for easy adjustment
- One size fit all

SKU: 6003058068248

## Lumbar Support



- Provides pain relief and compression for muscle injuries and general lower back dysfunctions
- Has two metal internal stays for additional support and adjustable side straps for varied compression
- Sizes have been measured around the middle of the waist line

SKU: 609580842279 (Medium) 81-90cm  
 SKU: 609580852278 (Large) 91-100cm  
 SKU: 609580862277 (XL) 101-112cm  
 SKU: 609580872276 (XXL) 113-125cm

## Hernia Belt



- Provides support and compression to inguinal hernias
- Contains flexible front pads
- Fastens around the waist and between the legs
- Sizes have been measured just below the waist line

SKU: 609580836292 (Small) 76-89cm  
 SKU: 609580846291 (Medium) 89-104cm  
 SKU: 609580856290 (Large) 104-117cm  
 SKU: 609580866299 (XL) 117-132cm

## Large Range of Elbow Supports & Braces available.



Visit your local store or go to:  
[www.ableworld.co.uk](http://www.ableworld.co.uk)  
 for more information.

## Hot & Cold Pack



- Can be used on the elbow, wrist, ankle and neck • Helps to reduce swelling and relieve pain from headaches, relax tense joints or ease arthritic pain • Can be used hot or cold • Ideal for repetitive strain injury

SKU: 4719863694108

## Elastic Ankle Wrap



- Gives compression to weak and injured ankles • Wrap around support with attachment hook • Reduces swelling on injured ankle muscles and joints

SKU: 609580846055 (S/M)  
SKU: 609580866053 (L/XL)

## Large Range of Knee Supports available.



Visit your local store or go to:  
[www.ableworld.co.uk](http://www.ableworld.co.uk)  
for more information.

## Arthritic Adjustable Knee Wrap



- Easy to use, wrap-around style knee brace • Velcro straps allowing you to control the amount of support and compression • Ideal if your knee fluctuates in size due to the swelling often associated with Arthritis • Designed with a 3-dimensional Trioxon lining which raises the temperature beneath the skin, increasing blood flow to the knee promoting healing.

SKU: 609580833000 (Small) 31-35cm  
SKU: 609580843009 (Medium) 36-40cm  
SKU: 609580853008 (Large) 41-45cm  
SKU: 609580863007 (XL) 46-50cm

## Elastic Knee Support



- Protection and support for weak and injured knees • Reduction of swelling and provides temporary pain relief • Can be worn immediately after an acute injury

SKU: 609580836094 (Small),  
SKU: 609580856092 (Large),  
SKU: 609580866091 (XL)

## Large Range of Ankle Supports available.



Visit your local store or go to:  
[www.ableworld.co.uk](http://www.ableworld.co.uk)  
for more information.

## Cervical Collar



- Velcro fastener at the back for trouble-free adjustment
- Provides correct support and stabilises the cervical spine
- Helps in the treatment of whiplash injuries and any injury where the neck requires immobilisation

SKU: 4719863693040 (Small) 27.9-33.7cm  
SKU: 4719863693057 (Medium) 33.7-38.7cm  
SKU: 4719863693064 (Large) 38.7-43.8cm  
SKU: 5055062629756 (XL) 43.8-48.3cm



# Powerchairs & Scooters

Some vital factors must be considered before selecting a mobility scooter. Selecting the most appropriate scooters involves a number of factors such as weight, size, storage, weight capacity, number of wheels, seat style, battery life, colour, steering and lighting. It is best to consider the features of different models of mobility scooters to determine the one that can suit your lifestyle the best.

A wide variety of accessories are also available, these include waterproof scooter covers, walking stick holders, baskets, batteries and lots more.

# Powerchairs



6 MONTHS FREE INSURANCE ON ALL POWERCHAIRS & SCOOTERS

## Go-Chair

RANGE OF COLOURS



The Go-Chair is a modern and stylish powerchair, perfect for indoor and outdoor use. It's super lightweight, portable and easily dismantles into 5 sections making it perfect for transportation. Featuring a built-in underseat storage making it perfect for storing those every day items.

### Specification:

Maximum Range: 8.74 miles  
Maximum Speed: 3.7 mph  
Maximum User Weight: 21.6 stone  
Turning Radius: 25.4"  
Batteries: 2 x 18AH

SKU: 5055062635764

## Titan



The Titan is a comfortable and stylish powerchair ideal for indoor and outdoor use. It's ultra-maneuvrable and compact size makes it ideal for around the home and in busy shopping centres. This powerchair is height adjustable and features a removable headrest and reclining seat to suit user requirements. The seat of this chair also swivels to facilitate for easy transfers on and off the chair.

### Specification:

Maximum Range: 15 miles  
Maximum Speed: 4 mph  
Maximum User Weight: 21 stone  
Turning Radius: 20"  
Batteries: 2 x 12v 34AH

SKU: 5055062627905

## I-Go



The I-Go features advanced folding technology enabling it to be quickly transported with ease. Also features front suspension, durable seating system and under seat storage.

The I-Go is designed to fit inside small spaces and is the perfect choice for active individuals.

### Specification:

Maximum Range: 6.2 miles  
Maximum Speed: 3.7mph  
Maximum User Weight: 18.8 stone  
Turning Radius: 35.4"  
Batteries: 2 x 6.6AH

SKU: 5055062629398

## Seren



The Seren is a compact and manoeuvrable powerchair which can be used both indoors and outdoors. It's dynamic mid-wheel drive system makes it easy to manoeuvre around tight corners. Features front and rear suspension, swivel seat facilitates transfer on and off the chair.

### Specification:

Maximum Range: 12 miles  
Maximum Speed: 4 mph  
Maximum User Weight: 21 stone  
Turning Radius: 24.4"  
Batteries: 2 x 12v 36AH

SKU: 5055062610518

## Spirit Auto-Fold

EXCLUSIVE TO ABLEWORLD



The Spirit Auto-Fold is lightweight and ideal for travelling. Featuring an easy fold mechanism by remote control, adjustable back and armrests and a padded seat for extra comfort are just a few of the extras available with this powerchair. The powerful motor, solid front wheels, air filled rear tyres and front suspension make it a smooth and comfortable ride.

### Specification:

Maximum Range: 9 miles  
Maximum Speed: 4 mph  
Maximum User Weight: 19.6 stone  
Turning Radius: 35.4"  
Batteries: 2 x 24v 10AH Lithium

SKU: 5055062632015

## Jazzy Air® 2

RANGE OF COLOURS



The Jazzy Air 2 elevates 12" in just 11 seconds! With a sleek, modern look this powerchair safely drives at speeds up to 4mph, while elevated allowing users to enjoy face-to-face social engagement. With Mid-Wheel 6 Drive and Active-Trac Suspension, the Jazzy Air 2 offers enhanced performance and stability indoors and out.

### Specification:

Maximum Range: 19 miles  
Maximum Speed: 4 mph  
Maximum User Weight: 21.6 stone  
Turning Radius: 20.5"  
Batteries: 2 x 40AH

SKU: 5055062631704



6 MONTHS FREE INSURANCE ON ALL POWERCHAIRS & SCOOTERS

## ST1

RANGE OF COLOURS

The ST1 dismantles easily into 5 pieces making it perfect for transportation. Despite it being light, the ST1 has plenty of power to easily take you up slopes and hills and is strong and stable for safety and security. Ideal for nipping to town or to help you out on family days out.



**Specification:**  
Maximum Range: 6 miles  
Maximum Speed: 4 mph  
Maximum User Weight: 18 stone

SKU: 5055062628117

## Scout

RANGE OF COLOURS

The Scout is highly reliable and great value for money, it's comfortable seat has a 360 degree swivel which allows for easy transfer. The Scout also features a height adjustable tiller and width adjustable armrests. It can be dismantled into several parts enabling it to fit in the boot of a car perfect for transportation. Comes with automatic electromagnetic brakes for additional safety and a delta handle bar ensuring everything you need is easily accessible.



**Specification:**  
Maximum Range: 10 miles  
Maximum Speed: 4 mph  
Maximum User Weight: 20 stone

SKU: 5055062626724

## Apex Lite

RANGE OF COLOURS

The Apex Lite is a comfortable and enjoyable scooter to use as it features so many aspects that make it the ideal scooter. The Apex Lite features 8" alloy style wheels, detachable frame design and a comfortable folding seat aiding for a smoother more enjoyable journey.



**Specification:**  
Maximum Range: 9 miles  
Maximum Speed: 4 mph  
Maximum User Weight: 21 stone

SKU: 5055062631773 (Black)  
SKU: 5055062631780 (Blue)  
SKU: 5055062631803 (Red)

## Venture

RANGE OF COLOURS

The Venture is ideal for use indoors and out where terrain is forgiving. Compact in size, the Venture has been developed to ensure a focus on comfort, style, performance and reliability. It includes a supreme comfort seat which swivels 360 on and off the scooter, height adjustable seat.



**Specification:**  
Maximum Range: 12 miles  
Maximum Speed: 4mph  
Maximum User Weight: 20 stone

SKU: 5060266849220 (Red)  
SKU: 5060266849237 (Blue)

## Ultralite 480

RANGE OF COLOURS

The Ultralite 480 has proven reputation for outstanding design and reliability. It delivers the ultimate in lightweight, transportable scooters, ensuring you stay independent at all times. It can be dismantled without tools and can be stored vertically in your home and fits easily into most car boots when disassembled.



**Specification:**  
Maximum Range: 8 miles  
Maximum Speed: 4mph  
Maximum User Weight: 18 stone

WHICH? BEST BUY

SKU: 5055062624089

## Explorer Sport

The Explorer Sport provides a convenience of a portable scooter with the comfort of a large scooter. Featuring full suspension which provides excellent ride quality, has anti-slip rear wheels with anti-roll back system safety device to prevent the scooter from rolling backwards.



**Specification:**  
Maximum Range: 13 miles  
Maximum Speed: 4 mph  
Maximum User Weight: 20 stone

SKU: 5055785714012

# Boot Scooters



## 6 MONTHS FREE INSURANCE ON ALL POWERCHAIRS & SCOOTERS

### Veo Sport

RANGE OF COLOURS

The Veo Sport is compact yet stylish with all round suspension to ensure your journey is as comfortable as possible. With a padded delta tiller and luxury seat, detailed with unique white accent stitching. It's easy to dismantle and perfect for storing in the boot of your car. It's dual compound puncture proof tyres, and rear reflectors for safety.



**Specification:**  
Maximum Range: 13.5 miles  
Maximum Speed: 4 mph  
Maximum User Weight: 20 stone

SKU: 5055062628209

### Sapphire 2

The Sapphire 2 is designed to give excellent manoeuvrability. It is portable and separates into 4 easy to manage parts. This scooter has an ergonomic floor panel which provides maximum leg room. It has ergonomically designed delta handle bars which allow you to rest your wrists whilst operating the scooter.



**Specification:**  
Maximum Range: 18.6 miles  
Maximum Speed: 4 mph  
Maximum User Weight: 23.5 stone

SKU: 5055062622931

### Jazzy Zero Turn

RANGE OF COLOURS

The Jazzy Zero Turn is a four-wheel scooter with a 3-wheel turning radius. It features dual motors for added traction in rough terrain and CTS suspension to ensure a smooth and comfortable drive. The seat is padded for comfort and support, and the delta style tiller enables easy to use left or right-hand operation.



**Specification:**  
Maximum Range: 9.9 miles  
Maximum Speed: 4 mph  
Maximum User Weight: 21 stone

SKU: 5055062629794

### Jiffy 4 Manual Fold

RANGE OF COLOURS

The Jiffy M4 is a lightweight folding scooter that allows users to simply transport and store their scooter, making it ideal for easy travelling. The Jiffy M4 can be easily folded or unfolded in seconds, further features and benefits include a comfortable padded seat and backrest, solid puncture-proof tyres.



**Specification:**  
Maximum Range: 8 miles  
Maximum Speed: 4mph  
Maximum User Weight: 19.7 stone

SKU: 055785718256 (Blue)  
SKU: 5055785718263 (Red)

### Apex Aluma-Lite

RANGE OF COLOURS

The Apex Aluma-Lite easily separates into two pieces and folds down small to fit into the boot of a car. Weighing in at just 29kg, it's one of the lightest boot scooters on the market! Ideal for anyone who struggles with heavy lifting. It features an attractive aluminum frame, adjustable tiller and additional foot room towards the front of the scooter.



**Specification:**  
Maximum Range: 12 miles  
Maximum Speed: 4mph  
Maximum User Weight: 21.6 stone

SKU: 5055062633784 (Red)  
SKU: 5055062633791 (Black)  
SKU: 5055062633807 (Blue)

### Jiffy 4 Auto-Fold

RANGE OF COLOURS

The Jiffy 4 is a compact scooter designed to fit into small car boots and is easily folded and unfolded by remote control within 12 seconds. It's height adjustable tiller to suit user requirements.



**Specification:**  
Maximum Range: 13 miles  
Maximum Speed: 4 mph  
Maximum User Weight: 19.7 stone

SKU: 5055785716252 (Red)  
SKU: 5055785716245 (Blue)

6 MONTHS FREE INSURANCE ON ALL POWERCHAIRS & SCOOTERS

## 388 Standard

RANGE OF COLOURS

The 388 Standard is a mid-size pavement scooter designed with a narrow, compact chassis for ease of manoeuvring, and includes a fully adjustable swivel seat. It has a five-position tiller angle adjustment. The seat slides forwards and backwards for comfort and is height adjustable.

**Specification:**

Maximum Range: 20 miles  
Maximum Speed: 4 mph  
Maximum User Weight: 21 stone



SKU: 5055062622962

## Vista

RANGE OF COLOURS

The Vista is a mid-size pavement scooter. Benefiting from the quick release feature it dismantles into 6 easy-to-lift sections for transporting in your car. The compact and slim-line style offers plenty of legroom yet it is extremely robust with generous turning manoeuvrability, making it ideal for everyday use. Its features include easy access tiller charging and delta handlebar plus the all-round suspension offers added comfort, and its solid puncture-proof tyres.

**Specification:**

Maximum Range: 24 miles  
Maximum Speed: 4 mph  
Maximum User Weight: 23.6 stone



SKU: 5055062631032 (Orange)  
SKU: 5055062631025 (Blue)

## Vista DX

RANGE OF COLOURS

The Vista DX is a pavement scooter with an increased battery size offers an impressive range of up to 34.5 miles. It dismantles into 6 easy-to-lift sections for transporting in your car. The compact and slim-line style offers plenty of legroom yet it is still extremely robust with generous turning manoeuvrability, making it ideal for everyday use. It features include easy access tiller charging and delta handlebar plus the all-round suspension offers added comfort.

**Specification:**

Maximum Range: 34.5 miles  
Maximum Speed: 4 mph  
Maximum User Weight: 22 stone



SKU: 5055062631056 (Orange)  
SKU: 5055062631049 (Blue)

## 388 XL

RANGE OF COLOURS

The 388XL is a road scooter with proven performance. It is designed with a narrow, compact chassis for ease of manoeuvring. It includes a fully adjustable swivel seat and the lift up tiller clears your way for getting on and off. The 388XL has a Class 3 specification for pavement and road use, it has a full lighting kit and easy to use controls.

**Specification:**

Maximum Range: 20 miles  
Maximum Speed: 6 mph  
Maximum User Weight: 21 stone



SKU: 5055062616398

# Road Scooters



## 6 MONTHS FREE INSURANCE ON ALL POWERCHAIRS & SCOOTERS

### S425

The S425 features all-round adjustable suspension and large 12" pneumatic wheels which provides a smoother ride! This scooter is 400 times more energy efficient than the standard scooter due to its LED lighting. This model also features an advanced gas strut assisted tiller for easy adjustment and a wig-wag finger thumb control for comfortable natural driving. The S425 features a higher back height and anti-tip wheels which move up as you ride over obstacles and keeps you safe on slopes.



**Specification:**  
Maximum Range: 26 miles  
Maximum Speed: 8 mph  
Maximum User Weight: 23.8 stone

SKU: 5055062627097

### S700

The S700 brings both luxury and superior outdoor performance and is the perfect choice if you're looking for an outdoor adventure! With 2x75AH batteries this scooter goes slightly further afield than many others in its range, with a higher kerb clearance and higher performance on gradients this road scooter will see no limits. The S700 features innovative active anti-tip wheels which move up as you ride over obstacles and keeps you safe on slopes. This scooter is 400 times more energy efficient than the standard scooter due to its LED lighting.



**Specification:**  
Maximum Range: 34 miles  
Maximum Speed: 8 mph  
Maximum User Weight: 25 stone

SKU: 5055062627103

### Athena

RANGE OF COLOURS

This midi-sized road scooter comes with a range of features including a new 4-pole technology motor, suspension, large 12 inch wheels with pneumatic tyres for increased range, swivel seat and adjustable tiller.



**Specification:**  
Maximum Range: 22 miles  
Maximum Speed: 8mph  
Maximum User Weight: 21.4 stone

EXCLUSIVE TO ABLEWORLD

SKU: 5055062633838 (Midnight Black)  
SKU: 5055062633845 (Lightning Blue)

### Pioneer

RANGE OF COLOURS

The Pioneer is a fully roadworthy, robust and stylish road scooter. Fitted with a lighting kit, handbrake and superior controller. It has 12" wheels and front and rear coil-spring suspension which guarantees comfort. It has a fully adjustable captain seat which slides to allow more leg room.



**Specification:**  
Maximum Range: 35 miles  
Maximum Speed: 8 mph  
Maximum User Weight: 25 stone

SKU: 5055062610983

### Vecta Sport

RANGE OF COLOURS

The Vecta Sport is an ultra-modern, compact yet powerful road scooter. This scooter uses the best of modern design in a very compact overall package with a host of different features. With exceptional legroom, an adjustable tiller and super comfortable seat it is a scooter designed for all users. The simple waterproof dash panel and controls make operating straightforward.



**Specification:**  
Maximum Range: 27.3 miles  
Maximum Speed: 8 mph  
Maximum User Weight: 25 stone

SKU: 5055062629725 (Cobalt Blue)  
SKU: 5055062635887 (Red)

### Ranger

RANGE OF COLOURS

The ideal mobility scooter for tackling off-road conditions as well as rough tracks. With a unique range of features the Ranger's enhanced front and rear suspension for a more comfortable ride as well as a new style LCD tiller display. An automatic back-up sensor for added peace of mind when reversing.



**Specification:**  
Maximum Range: 25 miles  
Maximum Speed: 8 mph  
Maximum User Weight: 25 stone

Only available in selected stores, contact your local store for more information.

SKU: 5055062633906

# Mobility Scooter Accessories

## Cabin Car MK2

Only available in selected stores, contact your local store for more information.

RANGE OF COLOURS

The Cabin Car MK2 is the most advanced mobility scooter in the world! It has many high-tech features including a reversing camera, USB charging port and full internal heater. It really does have all the creature comforts of a car! The soft suspension and long-range batteries keep it going for hours and the familiar digital dashboard makes driving simple.



### Specification:

Maximum Range: 22 miles  
Maximum Speed: 8 mph  
Maximum User Weight: 28 stone



SKU: 5055062630134

## Anti-Vibration Alarm



- Gives you peace of mind when leaving your scooter unattended
- Features a 113dB loud alarm, 7 sensitivity levels and an SOS panic alarm
- Wireless range of 10-20 metres

SKU: 5037409170862

## Scooter Lock



- Provides the best protection for mobility scooters or standard bicycles
- Comes with 2 keys, a rubber lock head with holder and key buckle

SKU: 5037409114705

## Tyrefix



- A tyre repair sealant that prevents flat tyres caused by punctures
- Designed for air filled tyres on mobility scooters
- Comes with a connection tube, spare valves and removal tool
- 1 litre bottle

SKU: 735346232852

## Embroidered Slipover Bag



- Strong and durable with zip fastenings
- Easily slips onto the back of your scooter seat
- Available in a Hi-Vis version making it easier to be seen

SKU: 5050996048994

SKU: 5050996049007 (Hi-Vis)

## Embroidered Bag



- Strong and durable perfect for any wheelchair or scooters
- Two side sleeves to place crutches or walking sticks
- Features a reflective strip for added safety and an embroidered Ableworld logo

SKU: 5050996047591

## Scooter Backpack



- A waterproof nylon material protects content from adverse weather conditions
- Fits small and medium size scooter seats (without headrests)

SKU: 5055181300123

# Mobility Scooter Accessories



## Scooterpac Canopy



- Folding canopy that fits almost any scooter
- Allows your scooter to be used in all weathers
- Non-permanent fixture that's easy to install and sits as a bag on the back of the scooter until required

SKU: 5055062627998

## Tiller Cover



- Slips over the majority of scooter controls and features a transparent window
- Easy to fit and folds into a small size for easy storage
- Ideal for keeping hands warm and dry

SKU: 5021196766766

## Control Panel Cover



- Prevents rain from getting into your scooter controls
- Universal to fit most scooters

SKU: 5050996040684 (Small)  
SKU: 5050996038698 (Med/Large)

## Tiller Accessory Pack



- Designed to keep the important parts of your scooter safe when out in wet weather
- Includes tiller cover, basket liner and lid to protect against contents from adverse weather and a travel bag for storage
- Fits almost all scooters

SKU: 5055181300093

## Storage Cover



- Heavy duty fabric that sits firmly over your scooter in all weathers
- Adjustable strap so the cover is firmly fitted
- Fits almost three and four wheeled scooters

SKU: 5050996038483

## Seat Cover



- Elasticated cover that fits over the seat and backrest of your scooter seat
- A hook and loop strap secures it around the base of the seat
- Fully waterproof

SKU: 5050996038704

## Scooter Cosy



- Lower body protection from wind and rain
- Has a cosy fur inner for added comfort
- Available in one universal size

SKU: 5050996038438

## Ponchos



SKU: 5050996038612  
(Unsleeved)



SKU: 5050996038636  
(Sleeved)

- Designed to provide warmth and protection from adverse weather conditions
- Available in one universal size
- Available in a sleeved and unsleeved version



## Threshold Ramps



- Lightweight ramp which overcomes wooden and UPVC door thresholds
- Allows the door to open and close when it's in position, and provides door frame protection
- Designed to handle all weather, so it can be left outside all year round
- Weight Capacity: 55 stone

**SKU: 5060344297073 (3")**

**SKU: 5060344297080 (4")**

**SKU: 5060344297097 (5")**

## Suitcase Ramps



3 ft Ramp



6 ft Ramp

- Ideal for access up and down steps, kerbs, into buildings or a vehicle
- Can be used by wheelchairs, scooters and powerchairs
- Weight Capacity: 42 stone

**SKU: 5055062627059 (3ft)**

**SKU: 5055062627066 (6ft)**

## Folding Channel Ramp



- Made from lightweight aluminium and provides a gentle incline to access over doorframes, kerbs or steps
- To be used with a scooter, powerchair or wheelchair
- Folds in half for easy storage and transportation
- Weight Capacity: 47 stone

**SKU: 50604344297257**

## Telescopic 7ft Ramp



- Two-piece ramp which extends to 7ft
- Lightweight and easy to use with a slip-resistant coating
- Designed for use with scooters, powerchairs and wheelchairs

**SKU: 5055062609314**



## Committed to keeping you safe

There is widespread concern in the country at present regarding “one man bands”, setting up and then within months closing down and leaving their customers “high and dry” often with equipment that needs expensive repair work needed on it.

That’s why it is important to check the following Golden Rules BEFORE you allow anyone to service your Mobility Equipment:-

1. Does the Engineer have constant, updated training?
2. What happens if the repair causes an accident or injury to others? Do they have insurance cover?
3. Are they running a business that provides professional back up?
4. Do they have more than one engineer (or even one at all), if not what happens when they are ill or on holiday.
5. Do they have the track record and back up to be here in twelve months time? It’s often better to buy from a company that have a proven track record and experienced staff rather than a ‘market trader’ or a ‘one man band’ that often are not around for long.

### Repairs

We are very proud of our extensive, skilled engineering department which is one of the best in the UK’s mobility industry. We have multiple workshops throughout the country, who are able to respond quickly to any repairs you may need on items including scooters, wheelchairs, powerchairs and many more.

We stock a range of batteries, tyres, tubes and sealants in the majority of our stores for your purchase and are able to get parts for hundreds of models.

### Servicing

Our engineers are fully trained on servicing and are able to service the following products and provide certificates or worksheets as required. We do recommend a service on your products at least once a year and we are able to provide a reminder when your next service is due.

### Scooter and powerchair servicing

Includes an extensive battery test to check the performance of your scooter, a mechanical and electrical inspection to make sure all the key parts of your scooter are operating and are safe to use which is especially key during the winter months.

### Wheelchair servicing

Includes checking tyre pressures, checking all fixings and fasteners and any brake adjustments which may be required.

### Riser/Recliner Chair servicing

Includes an onsite full system and operation test and lubrication as required to help cure any of those creaks and groans you may have.

**Specialised product services are available in selected stores including Hoists, Beds and bathlifts.**







# Toileting

Toileting is a very personal activity, therefore we stock hundreds of Toilet Aids which aim to enable an elderly or disabled user a more independent experience. In this section you will find a large selection of products making it easier for someone with incontinence to use the toilet. Height adjustable and folding commodes are available along with disabled toilet keys and portable urinals.

We also stock a huge range of disposable and washable incontinence products to suit all incontinence needs.

# Commodes & Raised Toilet Seats



## Folding Commode



- Lightweight folding commode ideal for use in the home or for holidays
- Supplied with a 7.5 litre pail
- Maximum User Weight: 20 stone

**SKU: 5021196732976**

## Essex Commode



- A height adjustable commode with fixed arms, can be used either as a bedroom or bathroom commode • Supplied with a 5-litre pail • Maximum User Weight: 25 stone

**SKU: 5055062623747**

## Surrey Commode



- A height adjustable commode with detachable arms, padded back/overseat
- Can be used either as a bedroom or bathroom commode • Supplied with a 5-litre pail • Maximum User Weight: 25 stone

**SKU: 5055062623754**

## Basketweave Commode



- Wooden framed armchair with woven fibre upholstery • Has a concealed plastic commode pot with a handle that is easily removed • Supplied with a 5-litre pail • Maximum User Weight: 25 stone

**SKU: 5055062602674**

## Sussex Commode



- Height adjustable bariatric commode designed to fit over most WC suites
- Supplied with a 7.5 litre pail
- Maximum User Weight: 40 stone

**SKU: 5055062623761**

## Wheeled Commode



- Glideabout commode with detachable footrests and arms, designed to fit over most WC suites • Supplied with a 7.5 litre pail • Maximum User Weight: 30 stone

**SKU: 5055062623778**

## Raised Toilet Seat



- A convenient, ergonomically designed raised toilet seat
- Designed to fit the majority of UK toilet bowl shapes
- Lid can be purchased separately and will also fit all size seats below
- Maximum User Weight: 30 stone

**SKU: 5016181620543 (Lid)**  
**SKU: 5016181620536 (2")**  
**SKU: 5016181620529 (4")**  
**SKU: 5016181620512 (6")**

## Commode Liners



- Disposable bag with an absorbent pad • Easily sealed with the plastic strap and can be disposed of in regular waste • Comes in packs of 20

**SKU: 5703538041303**

## Padded Toilet Seat



- Designed to fit the majority of UK toilet bowl shapes
- Had a washable vinyl white cover
- Can be cleaned easily with soapy water or disinfectant

SKU: 5050996009605

## Vinyl Gloves



- Suitable protection for when using cleaning materials, continence care or working with food
- Made from pvc with added plasticisers to make them soft and comfortable to wear
- Come in a box of 100
- Available in 3 sizes

SKU: 5055062629855 (Small)  
 SKU: 5055062629862 (Medium)  
 SKU: 5055062629879 (Large)

## Ashford Surround



- A height adjustable toilet frame with floor fixing feet and moulded arms for improved grip
- Maximum User Weight: 30 stone

SKU: 5055062623839

## Broadstairs Surround



- A width and height adjustable toilet frame with moulded arms for improved grip
- Dismantles easily for storage or transportation
- Maximum User Weight: 30 stone

SKU: 5055062608409



Visit us in store for free and discreet advice on incontinence products that may be able to help

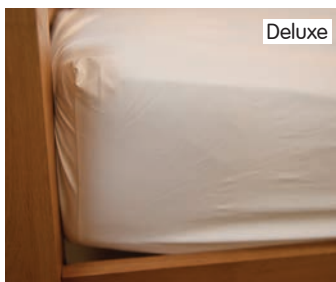
## President Toilet Frame



- A height adjustable toilet frame, designed to fit the majority of WC suites
- Had a clip on/off seat and can be installed as either freestanding or fixed
- Maximum User Weight: 24-40 stone

SKU: 5055062624362  
 SKU: 5055062625963 (Bariatric)

## Mattress Covers



Deluxe



Economy

- Fully waterproof and durable providing discrete comfort
- Machine washable
- Available in different sizes

### Economy Covers:

SKU: 5055062622078 (Single) SKU: 5055062622085 (Double)

### Deluxe Covers:

SKU: 5055062622092 (Single) SKU: 5055062622108 (Double) SKU: 5055062630752 (King Size)

## Solo Skandia Toilet Frame

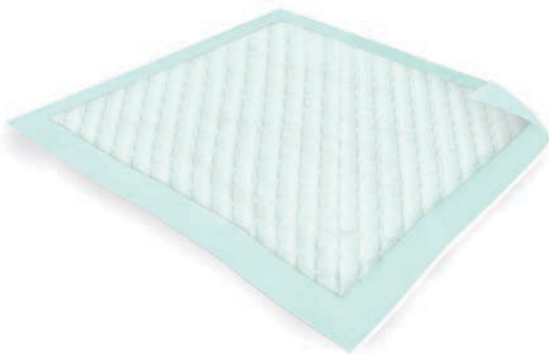


- A height adjustable toilet frame, designed to fit over the majority of WC suites
- Comes with a removable splash guard
- Can be free standing or fixed
- Maximum User Weight: 25 stone

SKU: 5055062623808 (Fixed)  
 SKU: 5055062624324 (Non-Fixed)



## Disposable Pads



- Disposable, absorbent pad ideal for use as added protection on beds and chairs
- Size: 60 x 40cm (Economy 25)
- Size: 60 x 60cm (Pack 25)
- Size: 60 x 90cm (Pack 30)

SKU: 5703538419690 (Economy 25)  
 SKU: 5703538124778 (25)  
 SKU: 5703538933738 (30)

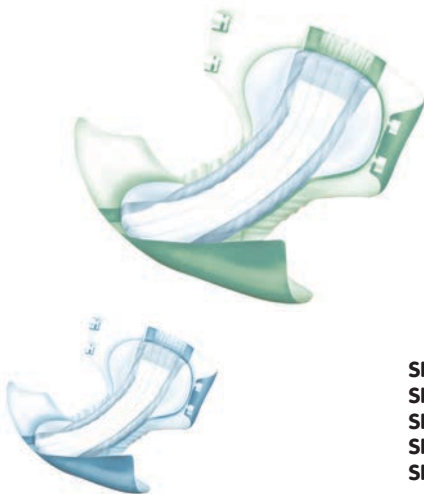
## Washable Bed Pad



- A high absorbency pad which is suitable for beds or chairs
- Suitable for light to moderate incontinence
- Machine washable

SKU: 5055062629886 (85x9 cm)  
 SKU: 5055062625796 (100x100cm with flaps)

## Delta Form



- All in one incontinence briefs
- Suitable for moderate to heavy incontinence
- Sold in packs of 15
- Available in various sizes
- To Fit Hip Size:  
 28-44" (Medium)  
 40-60" (Large)  
 44-68" (XL)

SKU: 5703538758454 (Medium)  
 SKU: 5703538758294 (Medium, High Absorbency)  
 SKU: 5703538758492 (Large)  
 SKU: 5703538758331 (Large, High Absorbency)  
 SKU: 5703538016486 (XL)

## Washable Seat Pad



- A high absorbency pad which is suitable for chairs
- Suitable for light to moderate incontinence
- Machine washable

SKU: 5055062621590

## Delta San



- Shaped incontinence pads for adults
- Suitable for moderate to heavy incontinence
- Available in various sizes
- Sold in packs of 30

SKU: 5703538758614 (No6)  
 SKU: 5703538758652 (No7)

## Abena Man



- Shaped incontinence pads for adults
- Suitable for light to normal active life
- Sold in packs of 15

SKU: 5703538382260

## Abri-San



- Shaped incontinence pads for adults
- Suitable for stress incontinence
- Available in various sizes

SKU: 5703538949333 (Mini)  
 SKU: 570358949371 (Normal)  
 SKU: 5703538335570 (Large)

## Abri-Flex



- Disposable pants for moderate to heavy incontinence
- Can be pulled up and down easily like normal underwear
- Sold in packs of 14
- Available in various sizes

SKU: 5710811037175 (Medium)  
SKU: 5710811037328 (Large)  
SKU: 5710811037427 (XL)

## Abri-Let



- A traditional rectangular pad
- Light absorbency or suitable as a booster pad if extra absorbency is required
- Sold in packs of 28

SKU: 5703538243943

## Net Briefs with Legs



- Semi-disposable pants
- Designed to hold disposable pads in place
- Can be washed and re-used a few times
- Available in various sizes

SKU: 5055062621934 (Small)  
SKU: 5055062621941 (Medium)  
SKU: 5055062621958 (Large)  
SKU: 5055062621965 (XL)

## Disposable Bags



- Delicately fragranced disposable bags
- Handles make it easier to close and tie the bags
- Sold in packs of 300

SKU: 5055062606290

## Waterproof Briefs



- Designed to be used with either pads or with absorbent roll
- Suitable for severe bladder and bowl incontinence
- Sold in packs of 3
- Available in various sizes

SKU: 5055062635832 (S)  
SKU: 5055062635849 (M)  
SKU: 5055062635856 (L)  
SKU: 5055062635863 (XL)  
SKU: 5055062635870 (XXL)

## Laundry Sacks



- Reduces the need to handle soiled or dirty garments
- Have a double seam and tie, which dissolves in the wash cycle and releases the items for washing
- Sold in packs of 50

SKU: 5055062631759



## Ladies Briefs



- A traditional style briefs
- No need to use any extra pads
- Absorbs up to 250ml
- Suitable for a light stress to moderate incontinence
- Available in various sizes

SKU: 5055062621675 (Small)  
SKU: 5055062621613 (Medium)  
SKU: 5055062621668 (Large)

## Male Urinal



- Moulded from clear plastic
- Had a sturdy handle for easier use and a snap on lid prevents splashing

SKU: 5021196759003

## Male Briefs



- A traditional style briefs
- They have a pad with a fly opening
- Absorbs up to 250ml
- Suitable for a light stress to moderate incontinence
- Available in various sizes

SKU: 5055062606252 (Medium)  
SKU: 5055062606269 (Large)  
SKU: 5055062606276 (XL)

## Female Urinal



- Designed to be able to use it whilst standing, sitting or lying
- Has a handle for easier use
- Capacity: 800ml

SKU: 5021196759010

## Bed Pan



- Bed pan moulded from clear plastic
- Has a handle and moulded indents for easy transportation
- Easily cleaned by steam, water or chemical

SKU: 5055062607518

## Fracture Bed Pan



- Ideal for use when lying down
- Low profile side and end handle make it easy and comfortable to use
- The lid helps to prevent spillages
- Colours may vary

SKU: 5055062623235

## Zinc Ointment



- Applied to the skin where the injury has occurred to soothe red irritated skin
- Disinfects small skin lesions
- Contains no colour, fragrance or parabens

SKU: 5703538402296

## Intimate Wash



- Ideal for use all over the body and is suitable for washing delicate, irritated and sensitive skin • Contains a pH3.5

SKU: 5703538226618

## Washing Foam



- Gently loosens and lifts soiling from the skin and leaves a water-repellent on the skin to protect from liquids • Available in 150ml or 300ml

SKU: 5055062627127 (150ml)  
SKU: 5055062627134 (300ml)

## Dry Wipes



- Used for personal hygiene and continence care • They give a softer, more friendly feel • Pack contains 100 wipes

SKU: 5010058053410

## Cleansing Wipes



- High quality wipes which can be used as an alternative to soap and water
- Suitable for hand washing or personal use • Pack contains 80 wipes

SKU: 5703538265754

## Anti-Bacterial Wipes



- Rapidly disinfects hand and equipment
- Kills 99.9% of bacteria
- Pack contains 50 wipes

SKU: 5060699106570



## Fabric & Upholstery Disinfectant



- Anti-bacterial spray that can be used to sanitise furniture and soft furnishings such as curtains and cushion covers
- Designed to eliminate 99.9% of bacteria
- Supplied in a 500ml bottle

SKU: 5060699106969



## Reusable Face Mask



- A reusable and washable fabric mask
- Helps to protect the face against wind and dust, as well as protecting you against viruses • One size fits all

SKU: 5037409300870

## Hand Sanitizer



- Water based hand sanitiser containing natural moisturizers including aloe vera and camomile • Kills 99.9% of bacteria • Supplied in a 75ml bottle

SKU: 5060699106891



## Radar Key



- Offers access to disabled people to locked public toilets
- Features a large head to help assist with turning it

SKU: 5055062619498  
SKU: 5055062628216 (Deluxe)

# Scooter Proficiency

Due to recent concerns over the safety of Mobility scooter users, Ableworld, the UK's leading mobility company now run a 'Scooter Proficiency Course'. Not only does the session offer scooter users the chance to brush up on their driving skills by practising on an indoor test track, but advice is also on hand on keeping themselves and their Scooters safer. There's no need to own a scooter as Ableworld also offer the chance for people to try out different types on the day!

Events are held when the demand is high enough in particular areas. In some cases the local Police will be on hand to offer free scooter ID marking, which will hopefully deter thieves and aid Police in recovering stolen scooters. A fully qualified Engineer will also be carrying out free safety checks.

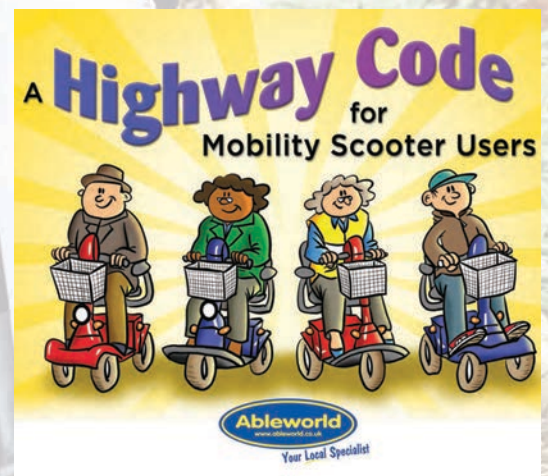
**Interested in booking?** Contact your local store. Places will be allocated on a first come, first served basis.



# Highway Code

As part of our dedicated on-going customer service, we sponsor a free Highway Code for Mobility Scooters and Users. This free guide covers everything you need to know in order to stay safe whilst using an electric mobility scooter and to keep other road users and pedestrians safe. The DVLA registration process, advice on insurance and guidance on how to use your scooter safely are all included in the code.

Pick up your free, easy to use, and illustrated Highway Code today from your local Ableworld Store.







# Wheelchairs

When choosing the right Wheelchair, you need to consider a number of factors. Your overall health and strength. How often you'll be travelling, and how much you intend to spend, to name a few. Here at Ableworld we have a wide variety of wheelchairs available including both self-propel and transit models. There is a variety of seat widths, colours and styles to ensure you find what you need.

Our trained staff at your local store will be happy to take you through your options and to help you find your perfect wheelchair



## Budget



A strong robust folding travelchair which is incredibly versatile and functional, making it ideal for occasional use. It can be folded into a compact size allowing the user to store or transport the chair with much greater ease. This folding travelchair has full length padded armrests and a well-padded seat and backrest for premium levels of comfort and support. It's upholstered in a touch vinyl which can easily be wiped clean making it practical and fit for purpose.

**Specification:**

Seat Height: 19"  
Seat Width: 19"  
Seat Depth: 16"  
Weight of Wheelchair: 2 stone  
Maximum User Weight: 18 stone

**SKU: 5055785714944**

## Bluebird



An innovative design which allows it to fold in on itself, resulting in a compact wheelchair that is only a third of its original size. Perfect solution for ad-hoc use to keep in the car or use on day trips out. It's taut fabric seat makes it comfortable and breathable. It's easy to push with a lightweight aluminium frame, flip-up armrests and swing in/out detachable footrests make it ideal for people transferring in and out of the chair.

**Specification:**

Seat Height: 18.5"  
Seat Width: 18"  
Seat Depth: 18"  
Weight of Wheelchair: 1.5 stone  
Maximum User Weight: 18 stone

**SKU: 5055062625741**

## I-Lite



This lightweight folding travelchair only weighs 11kg, making it ideal for talking on public transport and putting in the boot of your car. The I-Lite is easy for the attendant to use, with brakes on the handles for security as well as 2 stepper tubes allowing the attendant to safely raise the front wheels when on uneven terrain. With it's fabric seat its easy to wipe clean and allows space for a cushion to fit in to suit your needs.

**Specification:**

Seat Height: 16"  
Seat Width: 19"  
Seat Depth: 18.5"  
Weight of Wheelchair: 1.7 stone  
Maximum User Weight: 18 stone

**SKU: 5055062627813**

## Budget

A robust steel frame will withstand the test of time and the expected knobs which happen with daily use. The Budget Wheelchair features vinyl upholstery, removable and height adjustable footrests, which are able to provide maximum comfort to individual users to promote easy transfer in and out of the wheelchair. All wheels are puncture proof and feature parking brakes which provide security.

The Budget wheelchair has been Crash Tested and is recommended safe to be used and anchored into a suitable vehicle as a seat for a disabled user. The wheelchair features the Crash Tested anchor point



SKU	Seat Width	Seat Depth	Seat Height	Weight of Wheelchair	Maximum User Weight
<b>Self Propel:</b> 5055062627042	18"	16"	20"	2.8 stone	18 stone
<b>Transit:</b> 5055062629053	18"	16"	20"	2.3 stone	18 stone

## Aluminium

A great choice for anyone who uses a car regularly and needs to lift in and out of the car boot. Being extremely lightweight, it's easy to lift on a regular basis weighing just 8.5kg! This wheelchair is supportive and sturdy, with an 18" nylon seat for comfort, height adjustable quick release footrests with a swing-away function. Ideal for transferring in and out of the wheelchair. Suitable for ad-hoc use and for users who require a basic lightweight wheelchair.



SKU	Seat Width	Seat Depth	Seat Height	Weight of Wheelchair	Maximum User Weight
<b>Self Propel:</b> 5055062621804	18"	16"	19"	2.3 stone	18 stone
<b>Transit:</b> 5055062621811	18"	16"	19"	1.8 stone	18 stone

# Wheelchairs



## Ultra Lightweight

The Ultra Lightweight is made from aluminium to provide exceptional quality whilst remaining extremely lightweight. Designed with an attractive grey two-tone nylon upholstery with rear pocket for added convenience. The desk style armrests with fabric side panel giving the user exceptional security and for added luxury the fabric side panels come fitted with a pocket. The footrests are adjustable in height to give a perfect sitting position, and to make transfers easier they also feature swing-away function. When required, the Ultra Lightweight folds into a compact size perfect for transportation or storage.

Available in two sizes: 17" and 20"

The Ultra Lightweight wheelchair has been Crash Tested and is recommended safe to be used and anchored into a suitable vehicle as a seat for a disabled user. The wheelchair features the Crash Tested anchor point



SKU	Seat Width	Seat Depth	Seat Height	Weight of Wheelchair	Maximum User Weight
<b>Self Propel:</b>					
5055062609802	17"	16"	20"	2 stone	18 stone
5055062627868	20"	16"	20.5"	2 stone	18 stone
<b>Transit:</b>					
5055062609819	17"	16"	20"	1.8 stone	18 stone
5055062627875	20"	16"	20.5"	1.8 stone	18 stone

## G3 Wheelchair

A lightweight and foldable wheelchair ideal for easy transportation and storage. It's comfortable and sturdy with a padded seat with seat cushion included to give additional comfort for the user. Featuring a foldable backrest and armrests that are removable, swing away footrests and depth/angle adjustable aluminium brakes with ended levers. The G3 includes a crutch holder on the rear of the wheelchair.

Available in three sizes: 16", 18" and 20"

The G3 wheelchair has been Crash Tested and is recommended safe to be used and anchored into a suitable vehicle as a seat for a disabled user. The wheelchair features the Crash Tested anchor point



SKU	Seat Width	Seat Depth	Seat Height	Weight of Wheelchair	Maximum Use Weight
<b>Self Propel:</b>					
757450657703	16"	17"	20"	2.5 Stone	20.5 stone
757450657727	18"	17"	20"	2.5 Stone	20.5 stone
757450657741	20"	17"	20"	2.8 Stone	23.5 stone
<b>Transit:</b>					
757450657710	16"	17"	20"	2.3 Stone	20.5 stone
757450657734	18"	17"	20"	2.3 Stone	20.5 stone
757450657758	20"	17"	20"	2.6 Stone	23.5 stone

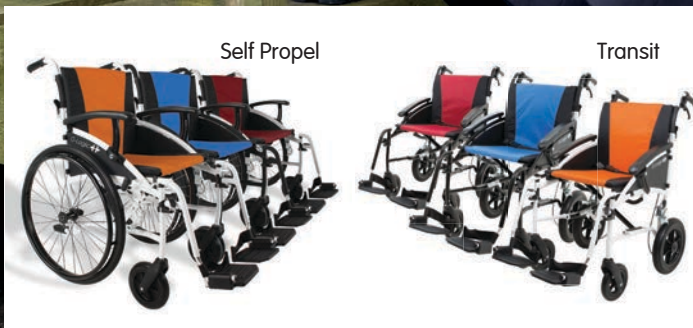
## Excel G-Logic



A modern, lightweight and durable wheelchair. The Excel G-Logic features a sporty design with sleek aluminium hubs and rims. The G-Logic folds easily and is lightweight for ease of transportation and storage by simply pulling up the seat upholstery and the wheelchairs folds in one easy motion. The ergonomic seat has been designed to ensure the user has a natural seated position and the backrest carefully adjusted ensuring lumbar support and alignment with the curvature of the spine.

Available in three sizes: 16", 18" and 20"

The Excel G-Logic wheelchair has been Crash Tested and is recommended safe to be used and anchored into a suitable vehicle as a seat for a disabled user. The wheelchair features the Crash Tested anchor point



SKU	Seat Width	Seat Depth	Seat Height	Weight of Wheelchair	Maximum User Weight
<b>Self Propel:</b>					
5055062629022	16"	17"	21.5"	1.8 stone	17 stone
5055062629039	18"	17"	21.5"	1.8 stone	17 stone
5055062629046	20"	17"	21.5"	2.3 stone	21 stone
<b>Transit:</b>					
5055062635726	18"	17"	20"	1.8 stone	17 stone
5055062635733	20"	17"	20"	1.8 stone	21 stone



# Wheelchairs



## Ergo 125

**6 Months  
FREE  
Insurance**

**CRASH  
TESTED**

The Ergo features flip back armrests, detachable upholstery for easy cleaning and quick release wheels as standard. It has a comfortable and supportive ergonomic seat and back rest. Made from lightweight aircraft aluminium with a double cross brace system to add strength and durability.

The Ergo 125 wheelchair has been Crash Tested and is recommended safe to be used and anchored into a suitable vehicle as a seat for a disabled user. The wheelchair features the Crash Tested anchor point icons to confirm its compatibility



Self Propel



Transit

SKU	Seat Width	Seat Depth	Seat Height	Weight of Wheelchair	Maximum User Weight
<b>Self Propel:</b> 5055062627042	18"	17"	20"	2.9 stone	18 stone
<b>Transit:</b> 5055062629053	18"	17"	20"	2.9 stone	18 stone

## WHEELCHAIR & MOBILITY SCOOTER HIRE

We have Wheelchairs & Scooters available to hire from selected stores.

We have rates to suit your needs.

Available for a day, a weekend or a week.

Visit your local store or go to [www.ableworld.co.uk](http://www.ableworld.co.uk) for more information.

Deposit of £40 and proof of ID and home address is required.



## Budget Wheelchair Bag



- A bag which fits onto the handles of a wheelchair • High visibility strip on the bag helps to increase user safety
- Made from waterproof nylon materials
- A bag which fits onto the handles of a wheelchair

SKU: 5055062607563

## Wheelchair Underseat Bag



- Accessible storage space under the seat and any wheelchair • Can be used to store coats, blankets and food
- Can be easily fitted and removed
- Designed to fit neatly onto the rear of most wheelchairs

SKU: 5055785708455

## Wheelchair Backpack



- Waterproof nylon material protects content from adverse weather conditions
- Extremely spacious, strong and durable bag

SKU: 5055181300086

## Wheelchair Bag



- Spacious and durable bag
- Ideal for things you wish to take on trips out

SKU: 5021196708674

## Wheelchair Storage Bag



- Strong and durable storage bag suitable for most folding wheelchairs
- Ideal for storage and travel • Supplied with a removable shoulder strap
- Length: 120cm

SKU: 5055181300109



## Deluxe Power Stroller



- Can be easily fitted and removed within seconds
- Incredibly portable to make transportation simple

SKU: 5055062609369

## Wheelchair Safety Belt



- Fastens around the waist and has a double adjustable snap lock fastening mechanism
- For use with wheelchairs and also scooters

SKU: 5060266840074

## Wheelchair Blanket



- Fleece blanket designed to keep you warm
- Lightweight and Soft
- Suitable for 16-18" width wheelchairs

SKU: 5055062633616

## Fingerless Wheelchair Gloves



- Designed with textured and padded palms, wide velcro wrist straps and looped finger pulls for support and ease of use
- Designed by wheelchair users, the stylish leather gloves offer greater grip and protection in all weathers
- Available in two sizes

SKU: 5055785714654 (Med) SKU: 5055785714661 (Large)

## Wheelchair Cosy



- Provides warmth and protection from the rain
- Totally waterproof and the smart navy fur lining retains heat
- A tough foot panel prevent scuffing around the base
- Held in place by elastic loops over the pushing handles, preventing you sliding down the seat
- Fleece blanket designed to keep you warm

SKU: 5050996038520

## Full Finger Wheelchair Gloves



- Designed with textured and padded palms and elasticated cuffs securely closed with a hook and loop tab to increase protection and ease of use.
- Designed by wheelchair users, the stylish leather gloves offer greater grip and protection for wet and winter weather.
- Available in two sizes

SKU: 5055785714692 (Med) 5055785714703 (Large)

## Luxury Fleece Cushion



- Ideal for most seating situations including a wheelchair or scooter
- Lightweight and easy to carry
- Supplied with a zipped luxury fleece faux sheepskin cover

SKU: 5050996046556



# What our Customers are saying about us

At Ableworld we love receiving feedback from our customers, as it gives us an insight into what we are doing well, and what we could further improve on. Take a read of some of our recent feedback from our customers below, or feel free to contact us with your own feedback.

## **Ableworld Oswestry - 5\* Trustpilot Review**

"After attending an appointment at RJ & AH Hospital we went into Ableworld. We were served by Mike who was the most helpful, pleasant and professional assistant that we have encountered for a long, long time. Nothing was too much trouble and he gave us extremely good advice on the products we purchased. It was a pleasurable experience and we shall certainly be visiting each time we go. Thank you Mike and thank you Ableworld."

**A. Richardson**

## **Ableworld Southport - 5\* Trustpilot Review**

"Took my mother to Ableworld for a wheelchair. Fantastic service received! My mother couldn't get over the experience, they couldn't have made her feel so comfortable, going out of their way to make sure she was satisfied with both chair and cost. Would recommend Ableworld in Southport to all that may require disability equipment!"

**M. Robson**

## **Ableworld Darlington - 5\* Facebook Review**

"I have recently bought a mobility scooter for my wife, the staff were absolutely 100%!! From their professional approach and advice with excellent demonstration on how it worked and came apart for putting in our car boot. I would definitely recommend this company over all the



others that we visited in Darlington. Excellent service and prices, don't believe me pop in for yourself and see you won't be disappointed!"

**B. Raper**

## **Ableworld Lincoln - 5\* Facebook Review**

"Visited the Lincoln store yesterday for the first time and was amazed what stock they carried. Everything you could possibly want to assist you with your disability. I went mad and came out with a new scooter! Such obliging staff who know what they're talking about, I will return!"

**Y. Blackburn**

## **Ableworld Paisley - 5\* Facebook Review**

"Recently had a chair lift installed in my mother's house. Would like to thank all the staff at Ableworld Paisley for an excellent service, especially Stuart and son for a professional installation. Has made such a difference to my mother's quality of life."

**J. Inglis**

## **Ableworld Colchester - 5\* Google Review**

"Can't fault them for taking their time whilst serving you. They adjusted everything to help mum sit properly in the wheelchair. Tried it out with different seat cushions, nothing was too much. Really made a difference to talk to someone with such good knowledge of their products."

**N. Mesina**

## **Ableworld Stafford - 5\* Trustpilot Review**

"Large showroom with very informative and friendly staff, they went out of their way to demonstrate equipment, would definitely recommend them for mobility products."

**M. Bolam**



<b>A</b>		Car Supports ..... 23	<b>G</b>	
Anti-Slip Bath Mats ..... 8	Cushions ..... 22-24	Gloves ..... 9		
Adjustable Beds ..... 12	Coccyx Wedges ..... 24	Garden Kneeler ..... 34		
Adlington Riser Recliner ..... 17	Comb ..... 26	Grab Rails ..... 42-43		
Astbury Riser Recliner ..... 19	Car Accessories ..... 36	<b>H</b>		
Anti-Slip Mats ..... 46-47	Coasters ..... 46	Heated Lumbar Support ..... 22		
Arthritic Gloves ..... 68	Clothing Protectors ..... 54	Hip Packs ..... 26		
Ankle Supports ..... 70	Cups ..... 55	Heel Cups ..... 29		
<b>B</b>		Hand Grip Exerciser ..... 32		
Bath & Shower Stool ..... 6	Crutches ..... 65	Hot & Cold Therapy ..... 35		
Bath Seat ..... 6	Canopies ..... 78	Heat Pads ..... 35		
Bath Boards ..... 7	Commodes ..... 82	Hearing Amplifier ..... 36		
Bathing Cushion ..... 7	Continence Care ..... 84	Hand Supports ..... 68		
Bathlifts ..... 7	<b>D</b>			
Bath Mats ..... 8	Dressing Stick ..... 25	Hernia Belt ..... 69		
Body Wash Pads ..... 9	Dressing Aids ..... 25-26	Hand Sanitizer ..... 87		
Beds ..... 12	Diabetic Socks ..... 30	<b>I</b>		
Bed Support Rails ..... 13	Disposable Protector ..... 54	Indiana Petite Riser Recliner ..... 16		
Back Rest ..... 13	Disposable Pads ..... 84	Insoles ..... 28-29		
Bed Relaxer ..... 13	<b>E</b>		Injury Supports ..... 68-69	
Bexton Riser Recliner ..... 16	Exercise Therapy ..... 33	<b>K</b>		
Back Support ..... 22	Egg Cups ..... 56	Key Safe ..... 46		
Brush ..... 26	Elbow Supports ..... 68	Key Turners ..... 46		
Blue Badge Holder ..... 36	<b>F</b>		Kettle ..... 56	
Bottle Opener ..... 57	Flannel Strap & Mitt ..... 9	Knives ..... 58		
Back Supports ..... 69	Foot Cleaner & Pumice ..... 9	Knee Support ..... 70		
Boot Scooters ..... 73-74	Fireside Chairs ..... 16	<b>L</b>		
Bed Pans ..... 87	Footcare ..... 28-29	Lotion Applicator ..... 9		
Briefs ..... 86	Fans ..... 35	Lumbar Supports ..... 22		
Budget Wheelchairs ..... 91	Floor Lamps ..... 37	Lap Blankets ..... 35		
<b>C</b>		LED Lights ..... 37-38		
Corner Shower Stool ..... 6	Furniture Raisers ..... 44	Lap Trays ..... 47		
Coniston Swivel Bather ..... 6	Foot Stools ..... 47	Leisure Trolley ..... 63		
Cast Protectors ..... 10	Four Wheel Walker ..... 61	<b>M</b>		
Chairs ..... 16-20	Folding Walking Frames ..... 62	Mobile Shower Chair ..... 6		
Chelsfield Lounge Chair ..... 16	Folding Walking Sticks ..... 64	Mattress Tilter ..... 13		
Chicago Anti-Microbial Riser Recliner ..... 17	Ferrules ..... 65	Men's Slippers ..... 28		
Cheshire Deluxe Riser Recliner ..... 19	Folding Ramps ..... 79			

Memory Foam Insoles .....	29	Raised Toilet Seats .....	82	Three Wheel Walker .....	60
Massage Ball .....	33			Trolleys .....	63
Magnifying Lamps .....	37	<b>S</b>		Tribase Ferrules .....	65
Magnifiers .....	38-39	Shower Stools .....	6	Transfer Aids .....	66
Motion Sensors .....	45	Shower Chairs .....	6	Threshold Ramps .....	79
Mugs .....	55	Shower Mats .....	8	Toilet Surrounds .....	83
Multi Opener .....	57	Steps .....	8	Travelchairs .....	86
Mattress Covers .....	83	Sponges .....	9		
		Shampoo Basin .....	10	<b>U</b>	
<b>N</b>		Shampoo Cap .....	10	Urinals .....	87
Nail Suction Brush .....	9	Shampoo Cap .....	10		
Net Bag .....	63	Sasha Riser Recliner .....	17	<b>V</b>	
Neck Support .....	70	Support Cushions .....	22	Vinyl Gloves .....	83
		Shoe Laces .....	25		
<b>O</b>		Shoehorns .....	25	<b>W</b>	
Oedema Socks .....	30	Shoe Aids .....	26	Wall Mounted Shower Stool .....	6
Overbed Tables .....	44	Slippers .....	27-28	Wrenbury Riser Recliner .....	18
Openers .....	57	Socks .....	30	Wedges .....	24
Ointment .....	85	Steering Aids .....	35	Women's Slippers .....	27
		Steel Grab Rails .....	42	Wide Fitting Socks .....	30
<b>P</b>		Safety Alert Systems .....	45	Watches .....	34
Pillows .....	13	Shoulder Supports .....	68	Wall Clocks .....	35
Prestbury Riser Recliner .....	20	Scooters .....	73-76	Wallet Magnifier .....	39
Pill Dispensers .....	32	Scooter Accessories .....	77	Washable Protector .....	54
Press Egg .....	33	Scooter Bags .....	77	Walkers .....	60-61
Pill Reminder .....	32	Scooter Covers .....	78	Walking Frames .....	62-63
Pedal Exerciser .....	34	Suitcase Ramps .....	79	Walking Frame Caddy .....	63
Plastic Grab Rails .....	42			Walking Sticks .....	64-65
Perching Stools .....	54	<b>T</b>		Walking Stick Accessories .....	66
Plates .....	56	Tap Turners .....	10	Wrist Supports .....	68
Powerchairs .....	72	Thermometer .....	10	Washable Bed & Seat Pads .....	84
Pavement Scooters .....	75	Toothpaste Squeezer .....	10	Wipes .....	86
Ponchos .....	78	Tarvin Fireside Chair .....	16	Waterproof Briefs .....	86
Pads .....	85	Toe Nail Cutter .....	26	Wheelchairs .....	86-90
Powerstroller .....	92	Tablet Aids .....	32	Wheelchair Accessories .....	91
		Theraputty .....	33		
<b>R</b>		Talking Watches .....	34	<b>Y</b>	
Riser Recliners .....	16-20	Table Lamps .....	37	Yoga Blocks .....	34
Reachers .....	45	Therapy Lamps .....	37		
Road Scooters .....	75-77	Tables .....	44		
Ramps .....	79	Telephone .....	46		
		Tipping Kettle .....	56		



Ableworld was founded in 2001 and is the leading mobility retailer in the UK. We provide a wide range of quality products and services for our customers at value-for-money prices.

Our knowledgeable and friendly store staff are ready to help you purchase items designed to make your lives more comfortable and active whilst keeping you independent. Our stores offer a wide range of mobility aids at affordable prices and our friendly teams are on hand to offer advice and guidance on suitable equipment

We have engineers available to service and repair mobility equipment. Our stairlift engineers are available to provide free, no obligation quotes. They can install, repair and service stairlifts if required.

Ableworld are members of NAEP and CERA giving customers even

more peace of mind. We are proud to be endorsed as a Which Trusted Trader and Handicare Prestige Partner, ensuring we provide our customers with the best possible service.

We are also proud to have been voted the Number 1 Mobility Retailer in the UK, so you can be sure you will be well looked after in any of our mobility stores.

### Specialist Team

The Ableworld Specialist Team provide personalised mobility equipment for adults and children. At Ableworld our Specialist Team are highly trained, so you can be sure they know how to respond to your unique situation and find the equipment that suits your needs. They provide a one to one service either in store or at the comfort of your own home.

For more information either contact your local store or call 0800 096 5465.

## STORES

BIRKENHEAD .....	0151 650 2200
BOURNEMOUTH .....	01202 575819
BRIDGEND .....	01656 856696
BROXBURN.....	01506 856565
BURTON .....	01283 546867
CARDIFF .....	02921 321072
CHESTER .....	01244 675608
CHRISTCHURCH.....	01202 496777
COLCHESTER.....	01206 561335
CONGLETON.....	01260 408161
CREWE .....	01270 255725
DARLINGTON.....	01325 481414
GLOUCESTER .....	01452 690250
HANLEY .....	01782 205901
HYDE.....	0161 543 7670
LINCOLN .....	01522 542856
LLANDUDNO .....	01492 338549
NANTWICH.....	01270 626971

NEWARK.....	01636 703598
NEWPORT .....	01952 820772
NORTHWICH .....	01606 331786
OSWESTRY .....	01691 680180
PAISLEY .....	0141 889 9925
<b>QUEENSFERRY .....</b>	<b>OPENING SUMMER 2021</b>
READING.....	01189 862121
RHYL .....	01745 336843
SALFORD.....	0161 728 1880
SHREWSBURY .....	01743 369427
SOUTHAMPTON.....	02380 440000
SOUTHPORT .....	01704 537631
STAFFORD .....	01785 319315
STOCKPORT.....	0161 4840832
STOCKTON .....	01642 602962
ST HELENS .....	01744 453038
WAVERTREE .....	0151 733 1118
WIGAN.....	01942 233200
WREXHAM.....	01978 358588

Further details on our stores can be found on [www.ableworld.co.uk](http://www.ableworld.co.uk)

All our stores are open Monday - Saturday 9am - 5.30pm. Our Bournemouth, Cardiff, Chester, Crewe, Hanley, Hyde, Llandudno, St Helens, Stafford and Southampton stores are also open on Sundays. Please note, our Salford store is open Monday - Friday 9am - 4pm.

